

D'ANDREA®

TECHNOLOGY FOR HIGH PRECISION



Made in Italy

p. 240

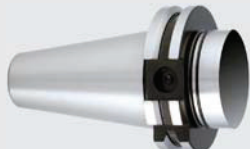


p. 194

DIN 69893 HSK-A

ER
WD
PF
CM
MS

p. 240



p. 198

DIN 69871 AD+B

ER
WD
PF
CM
MS

p. 240

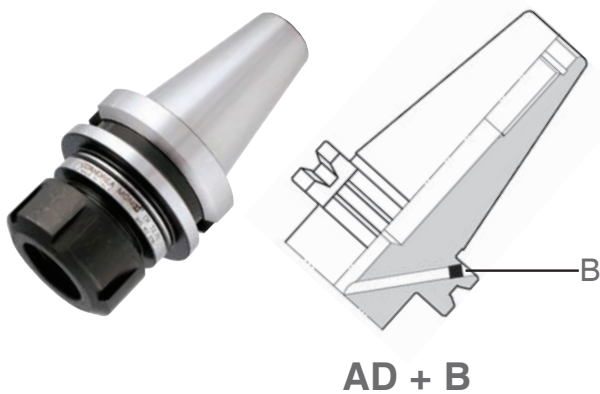


p. 204

MAS 403 BT AD+B

ER
WD
PF
CM
MS





*Quality, precision,
strength and convenience*

- INTEGRATED TOOLHOLDERS
- INTEGRIERTEN WERKZEUGHALTER
- PORTAHERRAMIENTAS INTEGRALES
- PORTE-OUTILS INTÉGRAUX
- PORTAUTENSILI INTEGRALI

GB The integrated MONOd' tool holders represent an ideal solution to equip any type of machine tool with HSK 63 and 100, DIN AD+B and BT AD+B base arbors, guaranteeing the benefits of a high quality and high precision, with a price that is highly competitive on the market. The MONOd' program includes ER collet chucks, Weldon end mill holders, Morse tapers, and tapping chucks.

All toolholders are designed to be balanced at G 6.3 8.000 RPM. MONOd' ER G 6.3 at 15.000 RPM.

D Die vollständigen Werkzeughalter MONOd' stellen die ideale Lösung zum Ausstatten jeder Art von Werkzeugmaschine mit Basisanschluss HSK 63 und 100, DIN AD+B und BT AD+B dar und garantieren die Vorteile hoher Qualität und hohem Präzisionsgrad, zu einem sehr wettbewerbsfähigem Marktpreis. Das MONOd' Programm schließt ER Zangenhalterungen, Weldon, Fräsenhalterung, Reduktionen, Schraubstöße und Gewindebohrer ein.

Alle Werkzeugaufnahmen sind ausgewuchtet von G 6,3 bei 8.000 U/min. MONOd' ER G 6,3 bei 15x.000 U/min.

E Los portaherramientas integrales MONOd' representan la solución ideal para equipar cualquier tipo de máquina herramienta con unión base HSK 63 y 100, DIN AD+B y BT AD+B, garantizando las ventajas de elevada calidad y alto grado de precisión, con un precio de mercado altamente competitivo. El programa MONOd' incluye portapinzas ER, Weldon, Portafresas, Reducciones a Morse y Roscadores.

Todos los portaherramientas son proyectados equilibrados G 6,3 con 8.000 giros por minuto. MONOd' ER G 6,3 con 15.000 giros por minuto.

F Les porte-outils intégraux MONOd' représentent la solution idéale pour équiper tous les types de machine outils avec une fixation de base HSK 63 et 100, DIN AD+B et BT AD+B, en garantissant les avantages de la qualité élevée et du haut niveau de précision, à un prix de marché très compétitif. Le programme MONOd' comprend des porte-pincas ER, Weldon, des porte-fraises, des réductions des étaux et des taraudeurs.

Tous les porte-outils sont équilibrés selon le projet G 6,3 à 8.000 tours/min. MONOd' ER G 6,3 à 15.000 tours/min.

I I portautensili integrali MONOd' rappresentano la soluzione ideale per attrezzare ogni tipo di macchina utensile con attacco base HSK 63 e 100, DIN AD+B e BT AD+B, garantendo i vantaggi di elevata qualità e alto grado di precisione, con un prezzo di mercato altamente concorrenziale. Il programma MONOd' include portapinzas ER, Weldon, Portafrese, Riduzioni Morse e Maschiatori.

Tutti i portautensili sono equilibrati di progetto, G 6,3 a 8.000 giri/min. MONOd' ER G 6,3 a 15.000 giri/min.

DIN 69893 HSK-A ER - DIN 6499

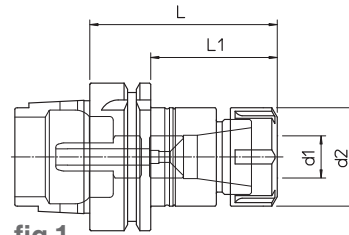


fig.1

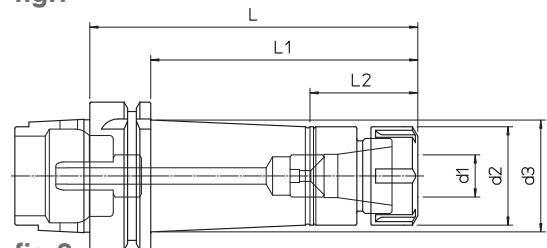


fig.2

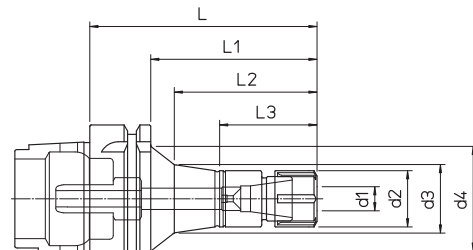
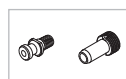


fig.3

- Supplied with coolant tube - without collets and clamping wrenches
- Lieferung inklusive Kühlmittelrohr. Ohne Spannzangen und Spannschlüssel.
- Completo con racor para el refrigerante - Pinzas elásticas y llaves de apriete excluidas
- Pourvu de raccord pour liquide d'arrosage - Sans pinces et clés de serrage
- Completo di raccordo per il refrigerante - Pinze elastiche e chiavi di serraggio escluse

HSK-A	REF.	CODE	TYPE	d1	d2	d3	d4	L	L1	L2	L3	kg	fig.
63	HSK-A63 ER16.80	71HСКА063ER1608	ER 16 M	0.5 ~ 10	22	32		80	54	41		1.1	1
	HSK-A63 ER16.120	71HСКА063ER1612				31		120	94			1.9	2
	HSK-A63 ER25.80	71HСКА063ER2508	ER 25	1 ~ 16	42	-		80	54	-		1.3	1
	HSK-A63 ER25.140	71HСКА063ER2514				47.5		140	114	46		1.7	2
	HSK-A63 ER32.90	71HСКА063ER3209	ER 32	2 ~ 20	50	-		90	64	-		1.6	1
	HSK-A63 ER32.160	71HСКА063ER3216				160		134	-	2.2		2	
100	HSK-A100 ER16.100	71HСКА100ER1610	ER 16 M	0.5 ~ 10	22	25	45	100	71	61	41.5	2.3	3
	HSK-A100 ER16.160	71HСКА100ER1616				34.5	44	160	131	126		2.5	
	HSK-A100 ER25.100	71HСКА100ER2510	ER 25	1 ~ 16	42	45.5		100	71	47		2.6	
	HSK-A100 ER25.160	71HСКА100ER2516				49.5		160	131			3.2	
	HSK-A100 ER32.120	71HСКА100ER3212	ER 32	2 ~ 20	50	55		120	91	52		3.1	2
	HSK-A100 ER32.160	71HСКА100ER3216				56.5		160	131			3.7	
	HSK-A100 ER40.120	71HСКА100ER4012	ER 40	3 ~ 26	63	71.5		120	91	60		3.5	



- WELDON TOOLHOLDER
- WERKZEUGAUFNAHME FÜR WELDON
- PORTAHERRAMIENTA WELDON
- PORTE-OUTIL WELDON
- PORTAUTENSILE WELDON

DIN 69893 HSK-A
WD - DIN 1835-B

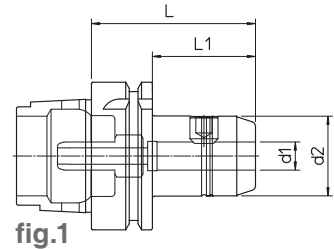


fig.1

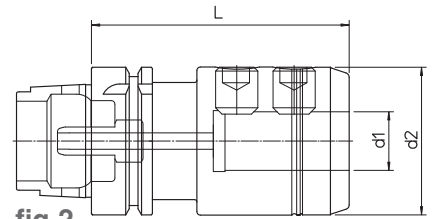


fig.2

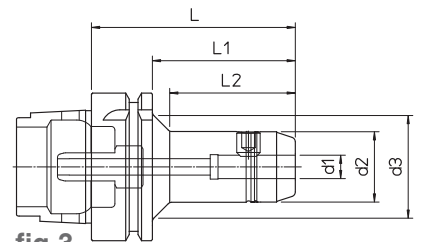


fig.3

- Supplied with coolant tube
- Lieferung inklusive Kühlmittelrohr
- Completo con racor para el refrigerante
- Pourvu de raccord pour liquide d'arrosage
- Completo di raccordo per il refrigerante

HSK-A	REF.	CODE	d1 ^{H5}	d2	d3	L	L1	L2	kg	fig.
63	HSK-A63 WD06.60	71HСКА063WD0606	6	23	-	60	34	-	0.8	1
	HSK-A63 WD08.65	71HСКА063WD0806	8	26		65	39		0.9	
	HSK-A63 WD10.70	71HСКА063WD1007	10	30		70	44		1.1	
	HSK-A63 WD12.70	71HСКА063WD1207	12	34		80	54		1.2	
	HSK-A63 WD16.80	71HСКА063WD1608	16	42		80	54		1.4	
	HSK-A63 WD20.80	71HСКА063WD2008	20	50		110	-		1.5	
	HSK-A63 WD25.110	71HСКА063WD2511	25	63		110	-		2.3	
	HSK-A63 WD32.110	71HСКА063WD3211	32	70		110	-		2.5	
100	HSK-A100 WD10.90	71HСКА100WD1009	10	30	45	90	61	53.5	2.3	3
	HSK-A100 WD12.100	71HСКА100WD1210	12	34		100	71	65.5	2.4	
	HSK-A100 WD14.100	71HСКА100WD1410	14	38		100	71	67.5	2.5	
	HSK-A100 WD16.100	71HСКА100WD1610	16	42		110	81	-	2.6	
	HSK-A100 WD18.110	71HСКА100WD1811	18	46	-	110	81	-	3	1
	HSK-A100 WD20.110	71HСКА100WD2011	20	50		120	91	-	3.1	
	HSK-A100 WD25.120	71HСКА100WD2512	25	63		120	91	-	3.9	
	HSK-A100 WD32.120	71HСКА100WD3212	32	70		120	91	-	4.3	
HSK-A100 WD40.120	71HСКА100WD4012	40	80	120	91	-	4.8			

DIN 69893 HSK-A PF

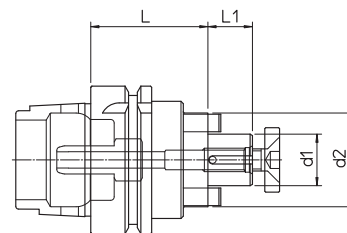


fig.1

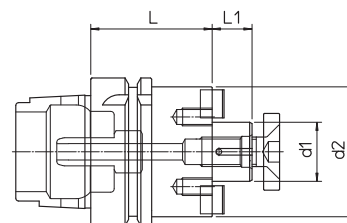


fig.2

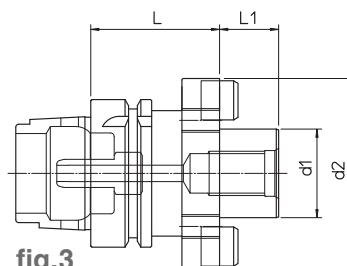
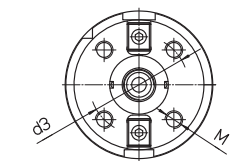
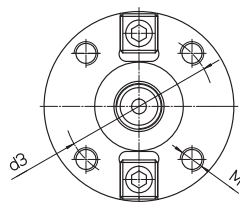


fig.3



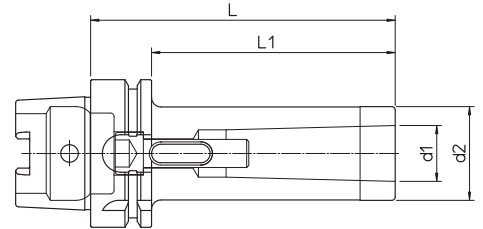
- Supplied with coolant tube
- Lieferung inklusive Kühlmittelrohr
- Completo con racor para el refrigerante
- Pourvu de raccord pour liquide d'arrosage
- Completo di raccordo per il refrigerante

HSK-A	REF.	CODE	d ₁	d ₂	d ₃	M	L	L ₁	kg	fig.
63	HSK-A63 PF16.50	71HСКА063PF1605	16	32			50	17	1.1	1
	HSK-A63 PF22.50	71HСКА063PF2205	22	40	-	-		19	1.2	
	HSK-A63 PF27.55	71HСКА063PF2705	27	50				21	1.4	
	HSK-A63 PF32.60	71HСКА063PF3206	32	60				24	1.8	
100	HSK-A100 PF22.65	71HСКА100PF2265	22	40			65	19	2.3	2
	HSK-A100 PF27.65	71HСКА100PF2765	27	50	-	-		21	2.5	
	HSK-A100 PF32.70	71HСКА100PF3270	32	60			70	24	2.9	
	HSK-A100 PF40.70	71HСКА100PF4070	40	88	66.7	M12		27	3.3	
	HSK-A100 PF60.75	71HСКА100PF6075	60	128.5	101.6	M16		40	4.2	



- MORSE TAPER TOOLHOLDER
- WERKZEUGAUFNAHME FÜR MORSEKEGEL
- PORTAHERRAMIENTA CONO MORSE
- PORTE-OUTIL CONE MORSE
- PORTAUTENSILE CONO MORSE

DIN 69893 HSK-A
CM - DIN 228 AB

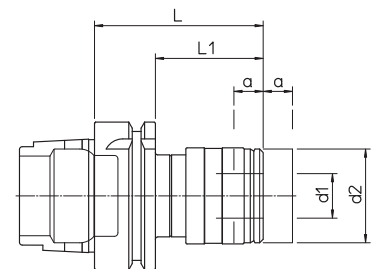


197

HSK-A	REF.	CODE	MORSE	d1	d2	L	L1	kg
63	HSK-A63 CM2.110 A-B	71HСКА063СMB211	2	17.780	32	110	84	2
	HSK-A63 CM3.130 A-B	71HСКА063СMB313	3	23.825	40	130	104	2.2
	HSK-A63 CM4.155 A-B	71HСКА063СMB415	4	31.267	48	155	129	2.6

- TAPPING TOOLHOLDER
- AUFNAHME MIT GEWINDESCHNEIDSCHNELLWECHSELFUTTER
- PORTAHERRAMIENTA PARA ROSCAR
- PORTE-OUTIL DE TARAUDAGE
- PORTAUTENSILE MASCHIATORE

DIN 69893 HSK-A
MS



HSK-A	REF.	CODE	d1	d2	L	L1	a	kg
63	HSK-A63 MS1 M3-12	71HСКА063M10312	19	39	72	46	7.5	1
	HSK-A63 MS2 M8-20	71HСКА063M20820	31	60	110	84	10	1.7



DIN 69871 AD+B40

ER - DIN 6499

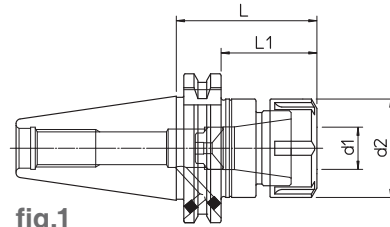


fig.1

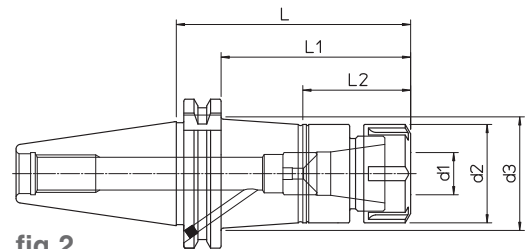


fig.2

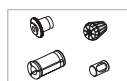
- Supplied without collets and clamping wrenches
- Ohne Spannzangen und Spanschlüssel.
- Pinzas elásticas y llaves de apriete excluidas
- Sans pinces et clés de serrage
- Pinze elastiche e chiavi di serraggio escluse

DIN	REF.	CODE	TYPE	d1	d2	d3	L	L1	L2	kg	fig.
40	DIN69871-AD+B40 ER16.60	71DIN-B40ER1606	ER 16 M	0.5 ~ 10	22	-	60	41	-	0.9	1
	DIN69871-AD+B40 ER16.100	71DIN-B40ER1610				29.5	100	81	41	1	2
	DIN69871-AD+B40 ER16.160	71DIN-B40ER1616				38	160	141	41	2	2
	DIN69871-AD+B40 ER25.60	71DIN-B40ER2506	ER 25	1 ~ 16	42	-	60	41	-	1.1	1
	DIN69871-AD+B40 ER25.100	71DIN-B40ER2510				47	100	81	46	1.6	2
	DIN69871-AD+B40 ER25.160	71DIN-B40ER2516				50	160	141	46	2.1	2
	DIN69871-AD+B40 ER32.70	71DIN-B40ER3207	ER 32	2 ~ 20	50	-	70	51	-	1.2	1
	DIN69871-AD+B40 ER32.110	71DIN-B40ER3211					110	91		1.7	
	DIN69871-AD+B40 ER32.160	71DIN-B40ER3216					160	141		2.7	
	DIN69871-AD+B40 ER40.80	71DIN-B40ER4008	ER 40	3 ~ 26	63	-	80	61	-	1.3	
	DIN69871-AD+B40 ER40.120	71DIN-B40ER4012					120	101	2.3		
	DIN69871-AD+B40 ER40.160	71DIN-B40ER4016					160	141	3.3		

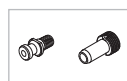
249



242-244



240



223



- COLLET CHUCK HOLDER
- SPANNZANGENFUTTER
- PORTAPINZAS
- PORTE-PINCES
- PORTAPINZE

DIN 69871 AD+B50

ER - DIN 6499

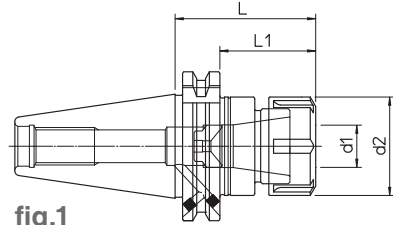


fig.1

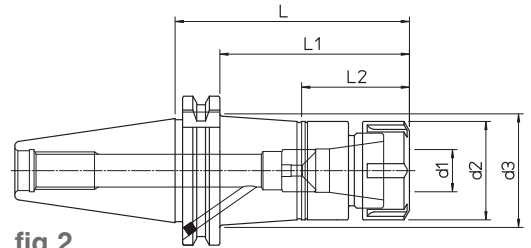


fig.2

199

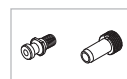
- Supplied without collets and clamping wrenches
- Ohne Spannzangen und Spannschlüssel.
- Pinzas elásticas y llaves de apriete excluidas
- Sans pinces et clés de serrage
- Pinze elastiche e chiavi di serraggio escluse

DIN	REF.	CODE	TYPE	d ₁	d ₂	d ₃	L	L ₁	L ₂	kg	fig.
50	DIN69871-AD+B50 ER16.100	71DIN-B50ER1610	ER 16 M	0.5 ~ 10	22	29.5	100	81	41	2.5	2
	DIN69871-AD+B50 ER16.160	71DIN-B50ER1616				32.5	160	141		3.3	
	DIN69871-AD+B50 ER25.70	71DIN-B50ER2507	ER 25	1 ~ 16	42	-	70	51	-	2.5	1
	DIN69871-AD+B50 ER25.110	71DIN-B50ER2511				48	110	91	46	2.8	2
	DIN69871-AD+B50 ER25.160	71DIN-B50ER2516	50	160	141	3.6					
	DIN69871-AD+B50 ER32.70	71DIN-B50ER3207	ER 32	2 ~ 20	50	-	70	51	-	2.9	1
	DIN69871-AD+B50 ER32.110	71DIN-B50ER3211				55	110	91	52	3.4	2
	DIN69871-AD+B50 ER32.160	71DIN-B50ER3216	57.5	160	141	4					
	DIN69871-AD+B50 ER40.100	71DIN-B50ER4010	ER 40	3 ~ 26	63	65	100	81	55	3.8	
	DIN69871-AD+B50 ER40.160	71DIN-B50ER4016				70	160	141		4.3	

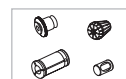
223



240



242-244

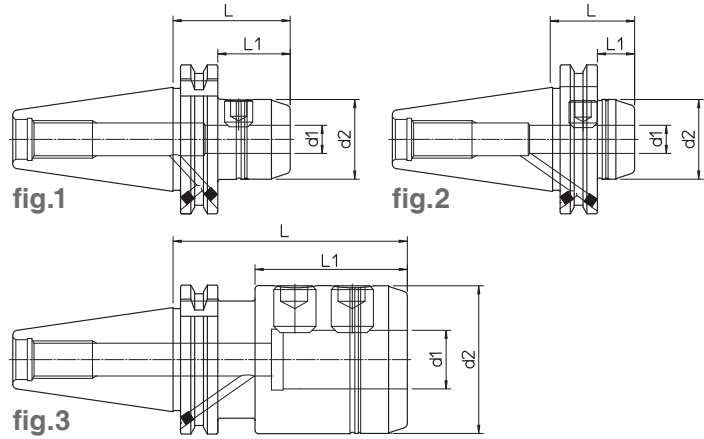


249



DIN 69871 AD+B40

WD - DIN 1835-B

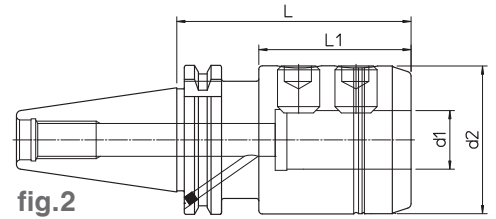
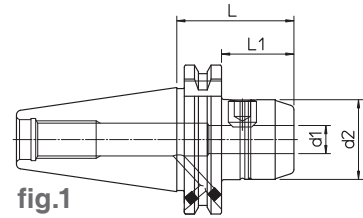


DIN	REF.	CODE	d ₁ ^{H5}	d ₂	L	L ₁	kg	fig.
40	DIN69871-AD+B40 WD06.50	71DIN-B40WD0605	6	23	50	31	0.8	1
	DIN69871-AD+B40 WD06.110	71DIN-B40WD0611			110	91	1	
	DIN69871-AD+B40 WD06.160	71DIN-B40WD0616			160	141	1.1	
	DIN69871-AD+B40 WD08.50	71DIN-B40WD0805	8	26	50	31	0.9	
	DIN69871-AD+B40 WD08.110	71DIN-B40WD0811			110	91	1.1	
	DIN69871-AD+B40 WD08.160	71DIN-B40WD0816			160	141	1.3	
	DIN69871-AD+B40 WD10.50	71DIN-B40WD1005	10	30	50	31	1	
	DIN69871-AD+B40 WD10.110	71DIN-B40WD1011			110	91	1.4	
	DIN69871-AD+B40 WD10.160	71DIN-B40WD1016			160	141	1.6	
	DIN69871-AD+B40 WD12.35	71DIN-B40WD1203	12	34	35	16	1	2
	DIN69871-AD+B40 WD12.50	71DIN-B40WD1205			50	31	1.1	1
	DIN69871-AD+B40 WD12.110	71DIN-B40WD1211			110	91	1.4	
	DIN69871-AD+B40 WD12.160	71DIN-B40WD1216			160	141	1.7	
	DIN69871-AD+B40 WD14.50	71DIN-B40WD1405	14	38	50	31	1.2	1
	DIN69871-AD+B40 WD14.110	71DIN-B40WD1411			110	91	1.6	
	DIN69871-AD+B40 WD16.35	71DIN-B40WD1603	16	42	35	16	1.1	2
	DIN69871-AD+B40 WD16.63	71DIN-B40WD1606			63	44	1.3	1
	DIN69871-AD+B40 WD16.110	71DIN-B40WD1611			110	91	1.7	
	DIN69871-AD+B40 WD16.160	71DIN-B40WD1616			160	141	2.2	
	DIN69871-AD+B40 WD18.63	71DIN-B40WD1806	18	46	63	44	1.4	1
	DIN69871-AD+B40 WD18.110	71DIN-B40WD1811			110	91	1.9	
	DIN69871-AD+B40 WD20.35	71DIN-B40WD2003	20	44	35	16	1.2	2
	DIN69871-AD+B40 WD20.63	71DIN-B40WD2006			63	44	1.5	1
	DIN69871-AD+B40 WD20.110	71DIN-B40WD2011		110	91	2.1		
DIN69871-AD+B40 WD20.160	71DIN-B40WD2016	160		141	2.6			
DIN69871-AD+B40 WD25.35	71DIN-B40WD2503	25	63	35	16	1.3	2	
DIN69871-AD+B40 WD25.100	71DIN-B40WD2510			100	65	2	3	
DIN69871-AD+B40 WD25.160	71DIN-B40WD2516			160	125	3.2		
DIN69871-AD+B40 WD32.100	71DIN-B40WD3210	32	70	100	65	2.5	3	
DIN69871-AD+B40 WD32.160	71DIN-B40WD3216			160	125	3.9		

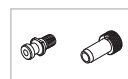


- WELDON TOOLHOLDER
- WERKZEUGAUFNAHME FÜR WELDON
- PORTAHERRAMIENTA WELDON
- PORTE-OUTIL WELDON
- PORTAUTENSILE WELDON

DIN 69871 AD+B50
WD - DIN 1835-B



DIN	REF.	CODE	d ₁ ^{H5}	d ₂	L	L ₁	kg	fig.
50	DIN69871-AD+B50 WD06.63	71DIN-B50WD0606	6	23	63	44	2.3	1
	DIN69871-AD+B50 WD06.110	71DIN-B50WD0611			110	91	2.4	
	DIN69871-AD+B50 WD06.160	71DIN-B50WD0616			160	141	2.5	
	DIN69871-AD+B50 WD08.63	71DIN-B50WD0806	8	26	63	44	2.4	
	DIN69871-AD+B50 WD08.110	71DIN-B50WD0811			110	91	2.5	
	DIN69871-AD+B50 WD08.160	71DIN-B50WD0816			160	141	2.7	
	DIN69871-AD+B50 WD10.63	71DIN-B50WD1006	10	30	63	44	2.5	
	DIN69871-AD+B50 WD10.110	71DIN-B50WD1011			110	91	2.7	
	DIN69871-AD+B50 WD10.160	71DIN-B50WD1016			160	141	2.9	
	DIN69871-AD+B50 WD12.63	71DIN-B50WD1206	12	34	63	44	2.6	
	DIN69871-AD+B50 WD12.110	71DIN-B50WD1211			110	91	2.8	
	DIN69871-AD+B50 WD12.160	71DIN-B50WD1216			160	141	3.2	
	DIN69871-AD+B50 WD14.63	71DIN-B50WD1406	14	38	63	44	2.7	
	DIN69871-AD+B50 WD14.110	71DIN-B50WD1411			110	91	3	
	DIN69871-AD+B50 WD16.63	71DIN-B50WD1606	16	42	63	44	2.8	
	DIN69871-AD+B50 WD16.110	71DIN-B50WD1611			110	91	3.2	
	DIN69871-AD+B50 WD16.160	71DIN-B50WD1616			160	141	3.7	
	DIN69871-AD+B50 WD18.63	71DIN-B50WD1806	18	46	63	44	2.9	
	DIN69871-AD+B50 WD18.110	71DIN-B50WD1811			110	91	3.4	
	DIN69871-AD+B50 WD20.63	71DIN-B50WD2006	20	50	63	44	3	
	DIN69871-AD+B50 WD20.110	71DIN-B50WD2011			110	91	3.6	
	DIN69871-AD+B50 WD20.160	71DIN-B50WD2016			160	141	4.2	
	DIN69871-AD+B50 WD25.80	71DIN-B50WD2508	25	63	80	61	3.5	
	DIN69871-AD+B50 WD25.110	71DIN-B50WD2511			110	91	4.1	
DIN69871-AD+B50 WD25.160	71DIN-B50WD2516	160			141	5.1		
DIN69871-AD+B50 WD32.100	71DIN-B50WD3210	32	70	100	81	4.6	2	
DIN69871-AD+B50 WD32.160	71DIN-B50WD3216			160	141	6		
DIN69871-AD+B50 WD40.100	71DIN-B50WD4010	40	80	100	81	4.8		
DIN69871-AD+B50 WD40.160	71DIN-B50WD4016			160	141	6.5		



DIN 69871 AD+B

PF

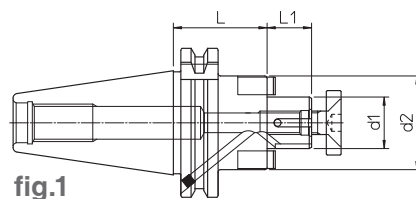


fig.1

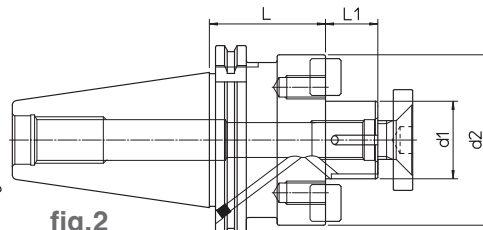
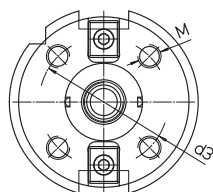


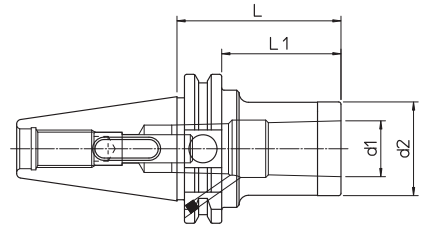
fig.2

DIN	REF.	CODE	d1	d2	d3	M	L	L1	kg	fig.		
40	DIN69871-AD+B40 PF16.35	71DIN-B40PF1603	16	32	-	-	35	17	0.9	1		
	DIN69871-AD+B40 PF16.110	71DIN-B40PF1611					110		1.3			
	DIN69871-AD+B40 PF16.160	71DIN-B40PF1616					160		1.9			
	DIN69871-AD+B40 PF22.40	71DIN-B40PF2204	22	40			40	19	1			
	DIN69871-AD+B40 PF22.110	71DIN-B40PF2211					110		1.7			
	DIN69871-AD+B40 PF22.160	71DIN-B40PF2216					160		2.1			
	DIN69871-AD+B40 PF27.45	71DIN-B40PF2704	27	50			45	21	1.2			
	DIN69871-AD+B40 PF27.110	71DIN-B40PF2711					110		2.2			
	DIN69871-AD+B40 PF27.160	71DIN-B40PF2716					160		2.9			
	DIN69871-AD+B40 PF32.50	71DIN-B40PF3205	32	60			50	24	1.7			
	DIN69871-AD+B40 PF32.110	71DIN-B40PF3211					110		3			
DIN69871-AD+B40 PF40.55	71DIN-B40PF4005	40	70	55	27	2.1						
50	DIN69871-AD+B50 PF16.40	71DIN-B50PF1604	16	32	-	-	40	17	2.4	2		
	DIN69871-AD+B50 PF16.110	71DIN-B50PF1611					110		2.8			
	DIN69871-AD+B50 PF16.160	71DIN-B50PF1616					160		3.1			
	DIN69871-AD+B50 PF22.45	71DIN-B50PF2204	22	40			45	19	2.6			
	DIN69871-AD+B50 PF22.110	71DIN-B50PF2211					110		3.2			
	DIN69871-AD+B50 PF22.160	71DIN-B50PF2216					160		3.7			
	DIN69871-AD+B50 PF27.50	71DIN-B50PF2705	27	50			50	21	2.7			
	DIN69871-AD+B50 PF27.110	71DIN-B50PF2711					110		3.6			
	DIN69871-AD+B50 PF27.160	71DIN-B50PF2716					160		4.4			
	DIN69871-AD+B50 PF32.55	71DIN-B50PF3205	32	60			55	24	3.2			
	DIN69871-AD+B50 PF32.120	71DIN-B50PF3212					120		5.5			
	DIN69871-AD+B50 PF40.60	71DIN-B50PF4006	40	88			66.7	M12	60		27	4.3
	DIN69871-AD+B50 PF40.120	71DIN-B50PF4012							120			7.1
DIN69871-AD+B50 PF60.70	71DIN-B50PF6007	60	128.5	101.6	M16	70	40	6.6				



- MORSE TAPER TOOLHOLDER
- WERKZEUGAUFNAHME FÜR MORSEKEGEL
- PORTAHERRAMIENTA CONO MORSE
- PORTE-OUTIL CONE MORSE
- PORTAUTENSILE CONO MORSE

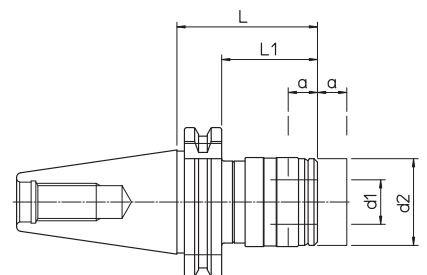
DIN 69871 AD+B
CM - DIN 228 AB



DIN	REF.	CODE	MORSE	d1	d2	L	L1	kg
40	DIN69871-AD+B40 CM2.50 A-B	71DIN-B40CMB205	2	17.780	32	50	31	1
	DIN69871-AD+B40 CM2.125 A-B	71DIN-B40CMB212				125	106	1.4
	DIN69871-AD+B40 CM3.70 A-B	71DIN-B40CMB307	3	23.825	40	51	1.1	
	DIN69871-AD+B40 CM3.140 A-B	71DIN-B40CMB314			42	140	121	1.5
50	DIN69871-AD+B50 CM2.60 A-B	71DIN-B50CMB206	2	17.780	32	60	41	2.6
	DIN69871-AD+B50 CM2.125 A-B	71DIN-B50CMB212				125	106	2.8
	DIN69871-AD+B50 CM3.60 A-B	71DIN-B50CMB306	3	23.825	40	41	2.7	
	DIN69871-AD+B50 CM3.140 A-B	71DIN-B50CMB314			42	140	121	3.2
	DIN69871-AD+B50 CM4.80 A-B	71DIN-B50CMB408	4	31.267	48	80	61	2.9

- TAPPING TOOLHOLDER
- AUFNAHME MIT GEWINDESCHNEIDSCHNELLWECHSELFUTTER
- PORTAHERRAMIENTA PARA ROSCAR
- PORTE-OUTIL DE TARAUDAGE
- PORTAUTENSILE MASCHIATORE

DIN 69871 A
MS



DIN	REF.	CODE	d1	d2	L	L1	a	kg
40	DIN69871-A40 MS1 M3-12	71DIN-A40M10312	19	36	60	40.9	7.5	0.9
	DIN69871-A40 MS2 M8-20	71DIN-A40M20820	31	53	98	78.9	12.5	1.3
50	DIN69871-A50 MS1 M3-12	71DIN-A50M10312	19	38	62	42.9	7.5	2.8
	DIN69871-A50 MS2 M8-20	71DIN-A50M20820	31	53	84	64.9	12.5	3.1
	DIN69871-A50 MS3 M14-33	71DIN-A50M31433	48	78	139	119.9	20	4.3



MAS 403 BT40 AD+B ER - DIN 6499

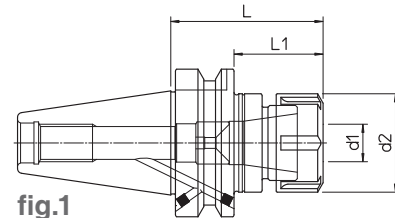


fig.1

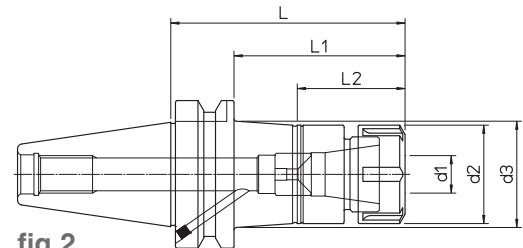


fig.2

- Supplied without collets and clamping wrenches
- Ohne Spannzangen und Spannschlüssel.
- Pinzas elásticas y llaves de apriete excluidas
- Sans pinces et clés de serrage
- Pinze elastiche e chiavi di serraggio escluse

BT	REF.	CODE	TYPE	d ₁	d ₂	d ₃	L	L ₁	L ₂	kg	fig.
40	MAS403 BT40-AD+B ER16.60	71MBT-B40ER1606	ER 16 M	0.5 ~ 10	22	-	60	33	-	1	1
	MAS403 BT40-AD+B ER16.100	71MBT-B40ER1610				28	100	73	41	1.1	2
	MAS403 BT40-AD+B ER16.160	71MBT-B40ER1616				36.5	160	133	41	2.1	2
	MAS403 BT40-AD+B ER25.65	71MBT-B40ER2506	ER 25	1 ~ 16	42	-	65	38	-	1.2	1
	MAS403 BT40-AD+B ER25.100	71MBT-B40ER2510				45.5	100	73	46	1.7	2
	MAS403 BT40-AD+B ER25.160	71MBT-B40ER2516				49.5	160	133	46	2.2	2
	MAS403 BT40-AD+B ER32.70	71MBT-B40ER3207	ER 32	2 ~ 20	50	-	70	43	-	1.3	1
	MAS403 BT40-AD+B ER32.110	71MBT-B40ER3211				110	83	1.8			
	MAS403 BT40-AD+B ER32.160	71MBT-B40ER3216				160	133	2.8			
	MAS403 BT40-AD+B ER40.80	71MBT-B40ER4008	ER 40	3 ~ 26	63	-	80	53	-	1.4	1
	MAS403 BT40-AD+B ER40.120	71MBT-B40ER4012				120	93	2.4			
	MAS403 BT40-AD+B ER40.160	71MBT-B40ER4016				160	133	3.4			



- COLLET CHUCK HOLDER
- SPANNZANGENFUTTER
- PORTAPINZAS
- PORTE-PINCES
- PORTAPINZE

MAS 403 BT50 AD+B
ER - DIN 6499

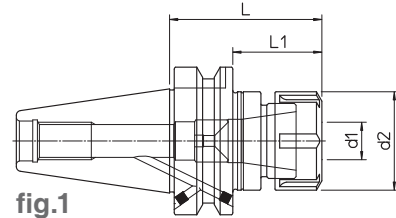


fig.1

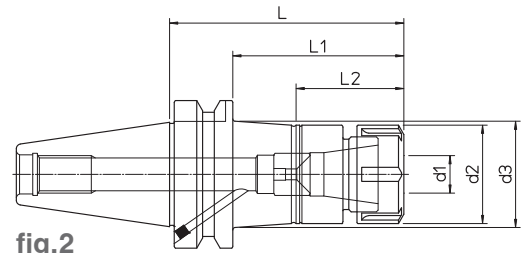
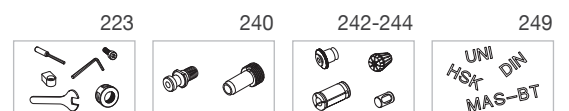


fig.2

205

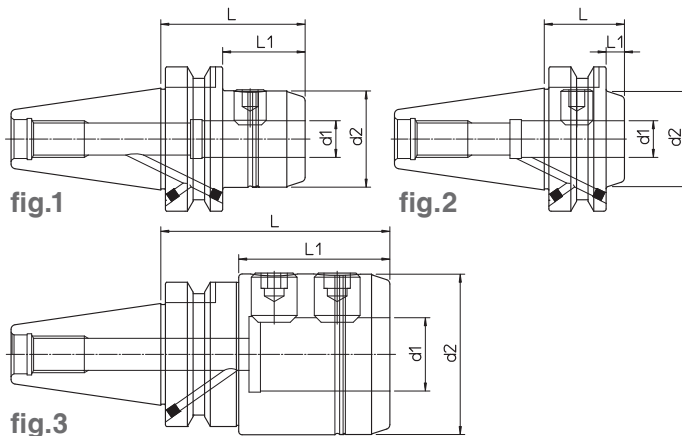
- Supplied without collets and clamping wrenches
- Ohne Spannzangen und Spannschlüssel.
- Pinzas elásticas y llaves de apriete excluidas
- Sans pinces et clés de serrage
- Pinze elastiche e chiavi di serraggio escluse

BT	REF.	CODE	TYPE	d1	d2	d3	L	L1	L2	kg	fig.
50	MAS403 BT50-AD+B ER16.100	71MBT-B50ER1610	ER 16 M	0.5 ~ 10	22	26.5	100	62	41	3.6	2
	MAS403 BT50-AD+B ER16.160	71MBT-B50ER1616				31	160	122		4.3	
	MAS403 BT50-AD+B ER25.75	71MBT-B50ER2507	ER 25	1 ~ 16	42	-	75	37	-	3.5	1
	MAS403 BT50-AD+B ER25.110	71MBT-B50ER2511				45.5	110	72	46	3.8	2
	MAS403 BT50-AD+B ER25.160	71MBT-B50ER2516				48.5	160	122		4.6	
	MAS403 BT50-AD+B ER32.80	71MBT-B50ER3208	ER 32	2 ~ 20	50	-	80	42	-	3.9	1
	MAS403 BT50-AD+B ER32.110	71MBT-B50ER3211				52.5	110	72	52	4.4	2
	MAS403 BT50-AD+B ER32.160	71MBT-B50ER3216				56	160	122		5	
	MAS403 BT50-AD+B ER40.100	71MBT-B50ER4010	ER 40	3 ~ 26	63	-	100	62	-	4.8	1
	MAS403 BT50-AD+B ER40.160	71MBT-B50ER4016				68.5	160	122	55	5.3	2

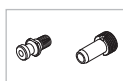


- WELDON TOOLHOLDER
- WERKZEUGAUFNAHME FÜR WELDON
- PORTAHERRAMIENTA WELDON
- PORTE-OUTIL WELDON
- PORTAUTENSILE WELDON

MAS 403 BT40 AD+B WD - DIN 1835-B

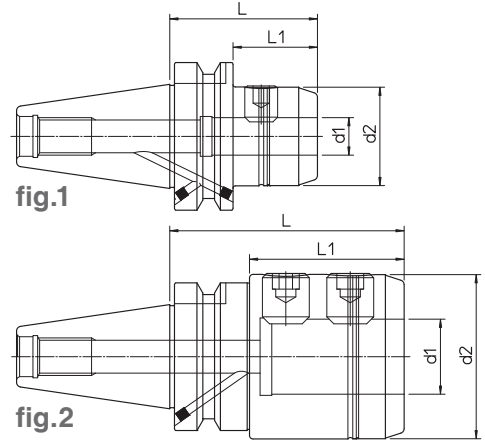


BT	REF.	CODE	d1 ^{H5}	d2	L	L1	kg	fig.
40	MAS403 BT40-AD+B WD06.50	71MBT-B40WD0605	6	23	50	23	0.8	1
	MAS403 BT40-AD+B WD06.110	71MBT-B40WD0611			110	83	0.9	
	MAS403 BT40-AD+B WD06.160	71MBT-B40WD0616			160	133	1.1	
	MAS403 BT40-AD+B WD08.50	71MBT-B40WD0805	8	26	50	23	0.9	
	MAS403 BT40-AD+B WD08.110	71MBT-B40WD0811			110	83	1.1	
	MAS403 BT40-AD+B WD08.160	71MBT-B40WD0816			160	133	1.3	
	MAS403 BT40-AD+B WD10.56	71MBT-B40WD1005	10	30	56	29	1	
	MAS403 BT40-AD+B WD10.110	71MBT-B40WD1011			110	83	1.2	
	MAS403 BT40-AD+B WD10.160	71MBT-B40WD1016			160	133	1.5	
	MAS403 BT40-AD+B WD12.35	71MBT-B40WD1203	12	34	35	8	0.9	2
	MAS403 BT40-AD+B WD12.56	71MBT-B40WD1205			56	29	1.1	1
	MAS403 BT40-AD+B WD12.110	71MBT-B40WD1211			110	83	1.4	
	MAS403 BT40-AD+B WD12.160	71MBT-B40WD1216			160	133	1.7	
	MAS403 BT40-AD+B WD14.56	71MBT-B40WD1405	14	38	56	29	1.2	
	MAS403 BT40-AD+B WD14.110	71MBT-B40WD1411			110	83	1.6	
	MAS403 BT40-AD+B WD16.35	71MBT-B40WD1603	16	42	35	8	1	2
	MAS403 BT40-AD+B WD16.63	71MBT-B40WD1606			63	36	1.3	1
	MAS403 BT40-AD+B WD16.110	71MBT-B40WD1611			110	83	1.7	
	MAS403 BT40-AD+B WD16.160	71MBT-B40WD1616			160	133	2.2	
	MAS403 BT40-AD+B WD18.63	71MBT-B40WD1806	18	46	63	36	1.4	
	MAS403 BT40-AD+B WD18.110	71MBT-B40WD1811			110	83	1.9	
	MAS403 BT40-AD+B WD20.35	71MBT-B40WD2003	20	50	35	8	1.1	2
	MAS403 BT40-AD+B WD20.63	71MBT-B40WD2006			63	36	1.5	1
	MAS403 BT40-AD+B WD20.110	71MBT-B40WD2011			110	83	2.1	
	MAS403 BT40-AD+B WD20.160	71MBT-B40WD2016			160	133	2.6	
	MAS403 BT40-AD+B WD25.35	71MBT-B40WD2503	25	63	35	8	1	2
	MAS403 BT40-AD+B WD25.100	71MBT-B40WD2510			100	73	2	3
	MAS403 BT40-AD+B WD25.160	71MBT-B40WD2516			160	133	3.2	
MAS403 BT40-AD+B WD32.100	71MBT-B40WD3210	32	70	100	67	2.5		
MAS403 BT40-AD+B WD32.160	71MBT-B40WD3216			160	127	3.9		

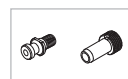


- WELDON TOOLHOLDER
- WERKZEUGAUFNAHME FÜR WELDON
- PORTAHERRAMIENTA WELDON
- PORTE-OUTIL WELDON
- PORTAUTENSILE WELDON

MAS 403 BT50 AD+B
WD - DIN 1835-B



BT	REF.	CODE	d1 ^{H5}	d2	L	L1	kg	fig.
50	MAS403 BT50-AD+B WD06.63	71MBT-B50WD0606	6	23	63	25	2.3	1
	MAS403 BT50-AD+B WD06.110	71MBT-B50WD0611			110	72	2.4	
	MAS403 BT50-AD+B WD06.160	71MBT-B50WD0616			160	122	2.6	
	MAS403 BT50-AD+B WD08.63	71MBT-B50WD0806	8	26	63	25	2.4	
	MAS403 BT50-AD+B WD08.110	71MBT-B50WD0811			110	72	2.5	
	MAS403 BT50-AD+B WD08.160	71MBT-B50WD0816			160	122	2.7	
	MAS403 BT50-AD+B WD10.70	71MBT-B50WD1007	10	30	70	32	3	
	MAS403 BT50-AD+B WD10.110	71MBT-B50WD1011			110	72	3.2	
	MAS403 BT50-AD+B WD10.160	71MBT-B50WD1016			160	122	3.4	
	MAS403 BT50-AD+B WD12.70	71MBT-B50WD1207	12	34	70	32	3.1	
	MAS403 BT50-AD+B WD12.110	71MBT-B50WD1211			110	72	3.3	
	MAS403 BT50-AD+B WD12.160	71MBT-B50WD1216			160	122	3.6	
	MAS403 BT50-AD+B WD14.70	71MBT-B50WD1407	14	38	70	32	3.2	
	MAS403 BT50-AD+B WD14.110	71MBT-B50WD1411			110	72	3.5	
	MAS403 BT50-AD+B WD16.80	71MBT-B50WD1608	16	42	80	42	3.3	
	MAS403 BT50-AD+B WD16.110	71MBT-B50WD1611			110	72	3.5	
	MAS403 BT50-AD+B WD16.160	71MBT-B50WD1616			160	122	4	
	MAS403 BT50-AD+B WD18.80	71MBT-B50WD1808	18	46	80	42	3.4	
	MAS403 BT50-AD+B WD18.110	71MBT-B50WD1811			110	72	3.7	
	MAS403 BT50-AD+B WD20.80	71MBT-B50WD2008	20	50	80	42	3.5	
	MAS403 BT50-AD+B WD20.110	71MBT-B50WD2011			110	72	3.8	
	MAS403 BT50-AD+B WD20.160	71MBT-B50WD2016			160	122	4.5	
	MAS403 BT50-AD+B WD25.100	71MBT-B50WD2510	25	63	100	62	4.5	
	MAS403 BT50-AD+B WD25.125	71MBT-B50WD2512			125	87	5	
MAS403 BT50-AD+B WD25.160	71MBT-B50WD2516	160			122	5.7		
MAS403 BT50-AD+B WD32.100	71MBT-B50WD3210	32	70	100	62	5.6		
MAS403 BT50-AD+B WD32.160	71MBT-B50WD3216			160	122	7		
MAS403 BT50-AD+B WD40.110	71MBT-B50WD4011	40	80	110	72	5.8		
MAS403 BT50-AD+B WD40.160	71MBT-B50WD4016			160	122	7.4		
								2



MAS 403 BT AD+B PF

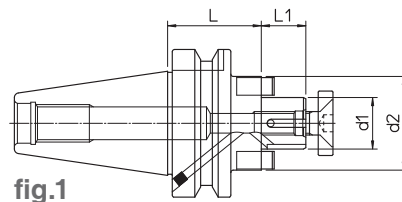


fig.1

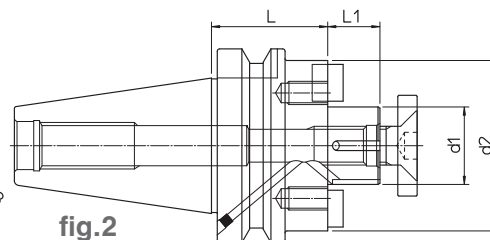
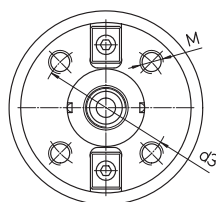


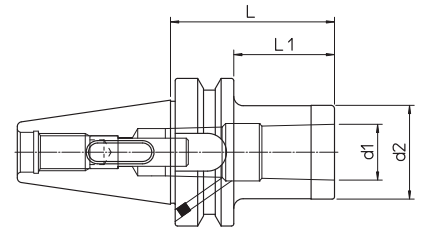
fig.2

BT	REF.	CODE	d1	d2	d3	M	L	L1	kg	fig.
40	MAS403 BT40-AD+B PF16.40	71MBT-B40PF1604	16	32	-	-	40	17	0.9	1
	MAS403 BT40-AD+B PF16.110	71MBT-B40PF1611					110		1.3	
	MAS403 BT40-AD+B PF16.160	71MBT-B40PF1616					160		1.6	
	MAS403 BT40-AD+B PF22.40	71MBT-B40PF2204	22	40			40	19	1	
	MAS403 BT40-AD+B PF22.110	71MBT-B40PF2211					110		1.6	
	MAS403 BT40-AD+B PF22.160	71MBT-B40PF2216					160		2.1	
	MAS403 BT40-AD+B PF27.45	71MBT-B40PF2704	27	50			45	21	1.2	
	MAS403 BT40-AD+B PF27.110	71MBT-B40PF2711					110		2.2	
	MAS403 BT40-AD+B PF27.160	71MBT-B40PF2716					160		2.9	
	MAS403 BT40-AD+B PF32.50	71MBT-B40PF3205	32	60			50	24	1.7	
	MAS403 BT40-AD+B PF32.110	71MBT-B40PF3211					110		3	
MAS403 BT40-AD+B PF40.55	71MBT-B40PF4005	40	70	55	27	2.1				
50	MAS403 BT50-AD+B PF16.50	71MBT-B50PF1605	16	32	50	17	2.4			
	MAS403 BT50-AD+B PF16.110	71MBT-B50PF1611			110		2.8			
	MAS403 BT50-AD+B PF16.160	71MBT-B50PF1616			160		3.1			
	MAS403 BT50-AD+B PF22.50	71MBT-B50PF2205	22	40	50	19	2.6			
	MAS403 BT50-AD+B PF22.110	71MBT-B50PF2211			110		3.2			
	MAS403 BT50-AD+B PF22.160	71MBT-B50PF2216			160		3.7			
	MAS403 BT50-AD+B PF27.55	71MBT-B50PF2705	27	50	55	21	2.7			
	MAS403 BT50-AD+B PF27.110	71MBT-B50PF2711			110		3.6			
	MAS403 BT50-AD+B PF27.160	71MBT-B50PF2716			160		4.3			
	MAS403 BT50-AD+B PF32.55	71MBT-B50PF3205	32	60	55	24	3.2			
	MAS403 BT50-AD+B PF32.120	71MBT-B50PF3212			120		5.5			
	MAS403 BT50-AD+B PF40.60	71MBT-B50PF4006	40	88	66.7	M12	60	27	4.3	
	MAS403 BT50-AD+B PF40.120	71MBT-B50PF4012					120	7.1		
MAS403 BT50-AD+B PF60.80	71MBT-B50PF6008	60	128.5	101.6	M16	80	40	6.8		



- MORSE TAPER TOOLHOLDER
- WERKZEUGAUFNAHME FÜR MORSEKEGEL
- PORTAHERRAMIENTA CONO MORSE
- PORTE-OUTIL CONE MORSE
- PORTAUTENSILE CONO MORSE

MAS 403 BT AD+B CM - DIN 228 AB

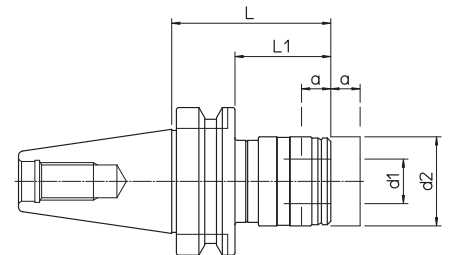


209

BT	REF.	CODE	MORSE	d1	d2	L	L1	kg
40	MAS403 BT40-AD+B CM2.50 A-B	71MBT-B40CMB205	2	17.780	32	50	23	1
	MAS403 BT40-AD+B CM2.125 A-B	71MBT-B40CMB212				125	98	1.3
	MAS403 BT40-AD+B CM3.70 A-B	71MBT-B40CMB307	3	23.825	40	70	43	1.1
	MAS403 BT40-AD+B CM3.140 A-B	71MBT-B40CMB314				140	113	1.5
50	MAS403 BT50-AD+B CM2.60 A-B	71MBT-B50CMB206	2	17.780	32	60	22	2.6
	MAS403 BT50-AD+B CM2.125 A-B	71MBT-B50CMB212				125	87	2.8
	MAS403 BT50-AD+B CM3.60 A-B	71MBT-B50CMB306	3	23.825	40	60	22	2.7
	MAS403 BT50-AD+B CM3.145 A-B	71MBT-B50CMB314				145	107	3.2
	MAS403 BT50-AD+B CM4.80 A-B	71MBT-B50CMB408	4	31.267	48	80	42	2.9

- TAPPING TOOLHOLDER
- AUFNAHME MIT GEWINDESCHNEIDSCHNELLWE
- PORTAHERRAMIENTA PARA ROSCAR
- PORTE-OUTIL DE TARAUDAGE
- PORTAUTENSILE MASCHIATORE

MAS 403 BT MS



BT	REF.	CODE	d1	d2	L	L1	a	kg
40	MAS403 BT40 MS1 M3-12	71MBT-40-M10312	19	36	67.5	40.5	7.5	0.9
	MAS403 BT40 MS2 M8-20	71MBT-40-M20820	31	53	94.5	67.5	12.5	1.3
50	MAS403 BT50 MS1 M3-12	71MBT-50-M10312	19	38	80	42	7.5	2.8
	MAS403 BT50 MS2 M8-20	71MBT-50-M20820	31	53	102.5	64.5	12.5	3.1
	MAS403 BT50 MS3 M14-33	71MBT-50-M31433	48	78	154.5	116.5	20	4.3

