

# D'ANDREA

## MONOd'CT

- INDEX
- INHALTSVERZEICHNIS
- ÍNDICE
- INDEX
- INDICE

p. 240



p. 212

DIN 69893 HSK-A  
CT

p. 214

ISO 26623-1 PSC  
CT

p. 240



p. 216

DIN 69871 AD+B  
CT

p. 240



p. 218

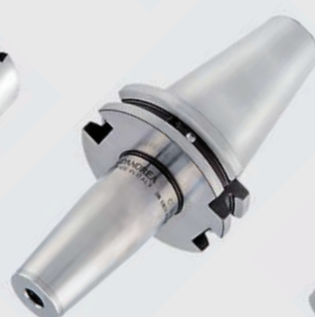
MAS 403 BT AD+B  
CT

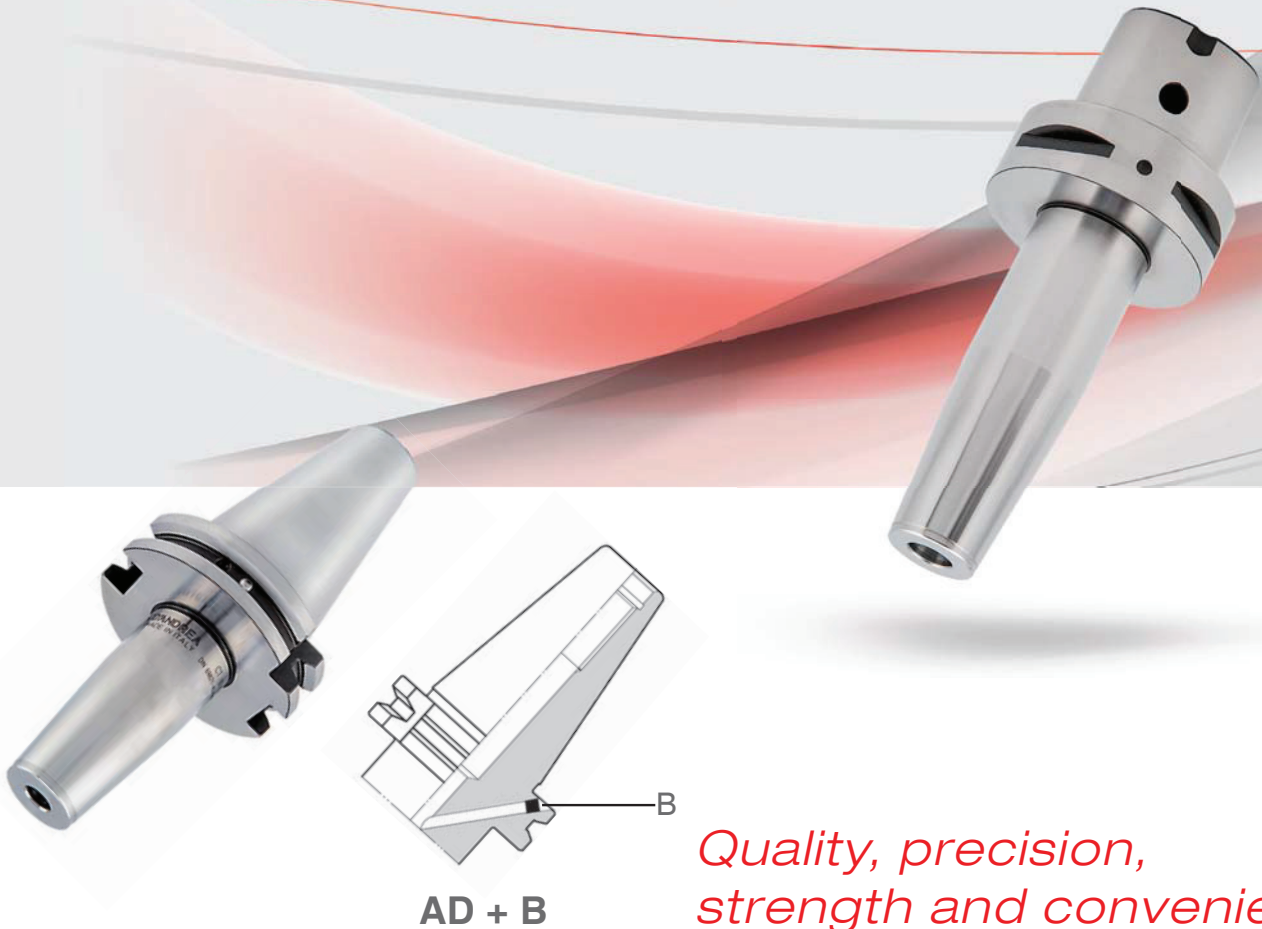


p. 220

PR CT

210





*Quality, precision,  
strength and convenience*

- SHRINK FIT CHUCKS
- SCHRUMPFSPANNFUTTER
- MANDRILA EMPALME TERMICO
- MANDRINS POUR FRETTAGE
- MANDRINI A CALETTAMENTO TERMICO

**GB** The integrated to fit chucks MONOd' CT tool holders represent an ideal solution to equip any type of machine tool with HSK 63 and 100, ISO 26623-1 PSC, DIN AD+B and BT AD+B base arbors, guaranteeing the benefits of a high quality and high precision.

**D** Die vollständigen Werkzeughalter auf schrumpfspannfutter MONOd' CT stellen die ideale Lösung zum Ausstatten jeder Art von Werkzeugmaschine mit Basisanschluss HSK 63 und 100, ISO 26623-1 PSC, DIN AD+B und BT AD+B dar und garantieren die Vorteile hoher Qualität und hohem Präzisionsgrad.

**E** Los portaherramientas integrales a empalme termico MONOd' CT representan la solución ideal para equipar cualquier tipo de máquina herramienta con unión base HSK 63 y 100, SO 26623-1 PSC, DIN AD+B y BT AD+B, garantizando las ventajas de elevada calidad y alto grado de precisión.

**F** Les porte-outils intégraux à frettage MONOd' CT représentent la solution idéale pour équiper tous les types de machine outils avec une fixation de base HSK 63 et 100, ISO 26623-1 PSC, DIN AD+B et BT AD+B, en garantissant les avantages de la qualité élevée et du haut niveau de précision.

**I** I portautensili integrali a calettamento termico MONOd' CT rappresentano la soluzione ideale per attrezzare ogni tipo di macchina utensile con attacco base HSK 63 e 100, ISO 26623-1 PSC, DIN AD+B e BT AD+B, garantendo i vantaggi di elevata qualità e alto grado di precisione.

## DIN 69893 HSK-A63

CT

0.003

RPM 25.000

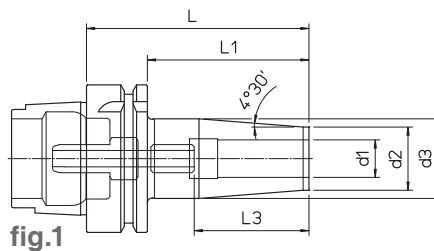


fig.1

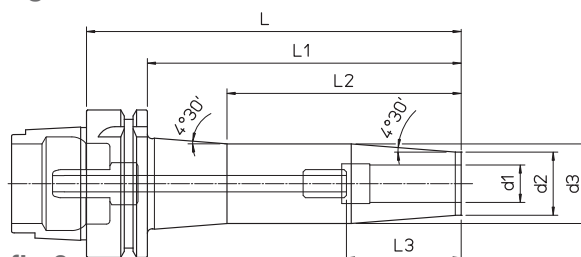


fig.2

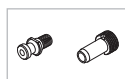
- Supplied with coolant tube
- Lieferung inklusive Kühlmittelrohr
- Completo con racor para el refrigerante
- Pourvu de raccord pour liquide d'arrosage
- Completo di raccordo per il refrigerante

HSK-A	REF.	CODE	d1	d2	d3	L	L1	L2	L3	kg	fig.
63	HSK-A63 CT03.80	71HSKA063CT0308	3	10	-	80	54	-	9	0.7	1
	HSK-A63 CT04.80	71HSKA063CT0408	4						12		
	HSK-A63 CT05.80	71HSKA063CT0508	5						15		
	HSK-A63 CT06.80	71HSKA063CT0608	6	21	27	120	94	-	22 / 36	0.8	1
	HSK-A63 CT06.120	71HSKA063CT0612								1	
	HSK-A63 CT06.160	71HSKA063CT0616								1.2	
	HSK-A63 CT06.200	71HSKA063CT0620	1.4	2							
	HSK-A63 CT08.80	71HSKA063CT0808	8		80	54	-	26 / 36	0.8	1	
	HSK-A63 CT08.120	71HSKA063CT0812							1		
	HSK-A63 CT08.160	71HSKA063CT0816		1.2							
	HSK-A63 CT08.200	71HSKA063CT0820	1.4	2							
	HSK-A63 CT10.85	71HSKA063CT1008	10		85	59	-	31 / 41	0.9	1	
	HSK-A63 CT10.120	71HSKA063CT1012							1.1		
	HSK-A63 CT10.160	71HSKA063CT1016		1.4							
	HSK-A63 CT10.200	71HSKA063CT1020	1.6	2							
	HSK-A63 CT12.90	71HSKA063CT1209	12		90	64	-	36 / 46	0.9	1	
	HSK-A63 CT12.120	71HSKA063CT1212							1.1		
	HSK-A63 CT12.160	71HSKA063CT1216		1.3							
	HSK-A63 CT12.200	71HSKA063CT1220	1.6	2							
	HSK-A63 CT14.90	71HSKA063CT1409	14		90	64	-	36 / 46	0.9	1	
	HSK-A63 CT14.120	71HSKA063CT1412							1.1		
	HSK-A63 CT14.160	71HSKA063CT1416		1.4							
	HSK-A63 CT16.95	71HSKA063CT1609	16	95	69	-	39 / 49	0.9	1		
	HSK-A63 CT16.120	71HSKA063CT1612						1.1			
	HSK-A63 CT16.160	71HSKA063CT1616						1.4			
	HSK-A63 CT16.200	71HSKA063CT1620	1.7	2							
	HSK-A63 CT18.95	71HSKA063CT1809	18		95	69	-	39 / 49	1.1	1	
	HSK-A63 CT18.120	71HSKA063CT1812							1.4		
	HSK-A63 CT18.160	71HSKA063CT1816		1.8							
	HSK-A63 CT20.100	71HSKA063CT2010	20	100	74	-	41 / 51	1.4	1		
HSK-A63 CT20.120	71HSKA063CT2012	1.3									
HSK-A63 CT20.160	71HSKA063CT2016	1.8									
HSK-A63 CT20.200	71HSKA063CT2020	2.2	2								
HSK-A63 CT25.120	71HSKA063CT2512	25		120	94	-	47 / 57	1.8	1		
HSK-A63 CT25.160	71HSKA063CT2516							2.5			

248

240

223



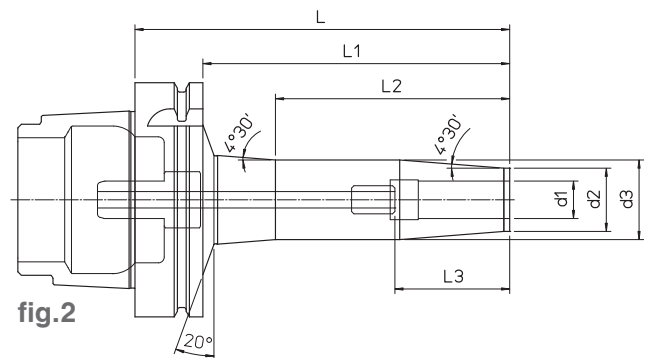
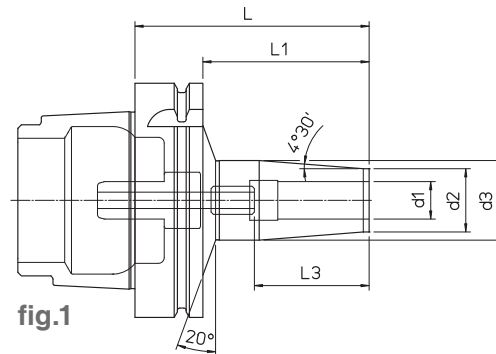
- SHRINK FIT CHUCKS
- SCHRUMPFSPANNFUTTER
- MANDRILA EMPALME TERMICO
- MANDRINS POUR FRETTAGE
- MANDRINI A CALETTAMENTO TERMICO

DIN 69893 HSK-A100

CT

0.003

RPM 12.000



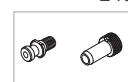
- Supplied with coolant tube
- Lieferung inklusive Kühlmittelrohr
- Completo con racor para el refrigerante
- Pourvu de raccord pour liquide d'arrosage
- Completo di raccordo per il refrigerante

HSK-A	REF.	CODE	d1	d2	d3	L	L1	L2	L3	kg	fig.
100	HSK-A100 CT06.85	71HSKA100CT0608	6	21	27	85	56	-	22 / 36	2.2	1
	HSK-A100 CT06.120	71HSKA100CT0612				120	91	2.4			
	HSK-A100 CT06.160	71HSKA100CT0616				160	131	100		2.5	
	HSK-A100 CT08.85	71HSKA100CT0808	8	24	32	85	56	-	26 / 36	2.2	1
	HSK-A100 CT08.120	71HSKA100CT0812				120	91	2.4			
	HSK-A100 CT08.160	71HSKA100CT0816				160	131	100		2.5	
	HSK-A100 CT10.90	71HSKA100CT1009	10	27	34	90	61	-	31 / 41	2.3	1
	HSK-A100 CT10.120	71HSKA100CT1012				120	91	2.5			
	HSK-A100 CT10.160	71HSKA100CT1016				160	131	100		2.7	
	HSK-A100 CT12.95	71HSKA100CT1209	12	33	42	95	66	-	36 / 46	2.3	1
	HSK-A100 CT12.120	71HSKA100CT1212				120	91	2.5			
	HSK-A100 CT12.160	71HSKA100CT1216				160	134	100		2.7	
	HSK-A100 CT14.95	71HSKA100CT1409	14	37	46	95	66	-	39 / 49	2.3	1
	HSK-A100 CT14.120	71HSKA100CT1412				120	91	2.5			
	HSK-A100 CT14.160	71HSKA100CT1416				160	131	100		2.8	
	HSK-A100 CT16.100	71HSKA100CT1610	16	41	50	100	71	-	41 / 51	2.3	1
	HSK-A100 CT16.120	71HSKA100CT1612				120	91	2.5			
	HSK-A100 CT16.160	71HSKA100CT1616				160	131	100		2.8	
	HSK-A100 CT18.100	71HSKA100CT1810	18	45	54	100	71	-	47 / 57	2.5	1
	HSK-A100 CT18.120	71HSKA100CT1812				120	91	2.8			
	HSK-A100 CT18.160	71HSKA100CT1816				160	131	100		3.1	
	HSK-A100 CT20.120	71HSKA100CT2012	20	49	58	120	91	-	51 / 61	2.7	1
	HSK-A100 CT20.160	71HSKA100CT2016				160	131	100		3.1	
	HSK-A100 CT25.120	71HSKA100CT2512				120	91	-		3.1	
HSK-A100 CT25.160	71HSKA100CT2516	160	131	100	3.8						
HSK-A100 CT32.120	71HSKA100CT3212	32	53	63	120	91	-	57 / 67	2.9		
HSK-A100 CT32.160	71HSKA100CT3216				160	131	100		3.5		

223

240

248



- SHRINK FIT CHUCKS
- SCHRUMPFSPANNFUTTER
- MANDRILA EMPALME TERMICO
- MANDRINS POUR FRETTAGE
- MANDRINI A CALETTAMENTO TERMICO

ISO 26623-1 PSC63

CT

0.003

RPM 25.000

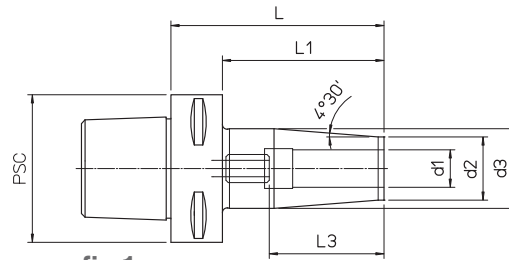


fig.1

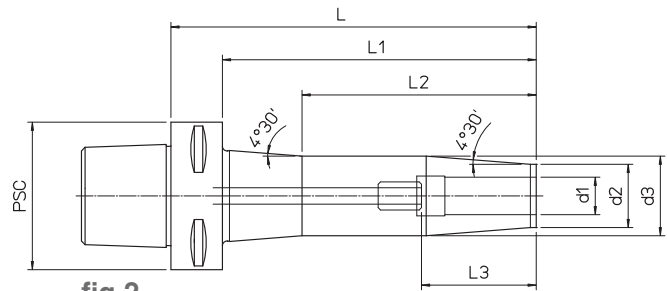


fig.2

PSC	REF.	CODE	d1	d2	d3	L	L1	L2	L3	kg	fig.			
63	PSC 63 CT03.80	71PSC-063CT0308	3	21	27	80	58	-	9	0.8	1			
	PSC 63 CT04.80	71PSC-063CT0408	4						12					
	PSC 63 CT05.80	71PSC-063CT0508	5						15					
	PSC 63 CT06.80	71PSC-063CT0608	6	21	27	120	98	100	22 / 36	1	1			
	PSC 63 CT06.120	71PSC-063CT0612	6						160	138	1.2	2		
	PSC 63 CT06.160	71PSC-063CT0616	6						80	58	0.8	1		
	PSC 63 CT08.80	71PSC-063CT0808	8	21	27	120	98	-	26 / 36	1	1			
	PSC 63 CT08.120	71PSC-063CT0812								120		98	1.2	2
	PSC 63 CT08.160	71PSC-063CT0816								160		138	100	1.2
	PSC 63 CT10.80	71PSC-063CT1008	10	24	32	80	58	-	31 / 41	0.9	1			
	PSC 63 CT10.120	71PSC-063CT1012								120		98	1.1	1
	PSC 63 CT10.160	71PSC-063CT1016								160		138	100	1.4
	PSC 63 CT12.85	71PSC-063CT1208	12	24	32	85	63	-	36 / 46	0.9	1			
	PSC 63 CT12.120	71PSC-063CT1212								120		98	1.1	1
	PSC 63 CT12.160	71PSC-063CT1216								160		138	100	1.3
	PSC 63 CT14.85	71PSC-063CT1408	14	27	34	85	63	-	36 / 46	0.9	1			
	PSC 63 CT14.120	71PSC-063CT1412								120		98	1.1	1
	PSC 63 CT14.160	71PSC-063CT1416								160		138	100	1.4
	PSC 63 CT16.85	71PSC-063CT1608	16	27	34	85	63	-	39 / 49	0.9	1			
	PSC 63 CT16.120	71PSC-063CT1612								120		98	1.1	1
	PSC 63 CT16.160	71PSC-063CT1616								160		138	100	1.4
	PSC 63 CT18.90	71PSC-063CT1809	18	33	42	90	68	-	39 / 49	1.1	1			
	PSC 63 CT18.120	71PSC-063CT1812								120		98	1.4	1
	PSC 63 CT18.160	71PSC-063CT1816								160		138	100	1.8
	PSC 63 CT20.90	71PSC-063CT2009	20	33	42	90	68	-	41 / 51	1.4	1			
	PSC 63 CT20.120	71PSC-063CT2012								120		98	1.3	1
	PSC 63 CT20.160	71PSC-063CT2016								160		138	100	1.8
	PSC 63 CT25.120	71PSC-063CT2512	25	44	53	120	98	-	47 / 57	1.4	1			
PSC 63 CT25.160	71PSC-063CT2516	160								138		1.8	1	

252

223



- SHRINK FIT CHUCKS
- SCHRUMPFSPANNFUTTER
- MANDRILA EMPALME TERMICO
- MANDRINS POUR FRETTAGE
- MANDRINI A CALETTAMENTO TERMICO

ISO 26623-1 PSC80

CT

0.003

RPM 12.000

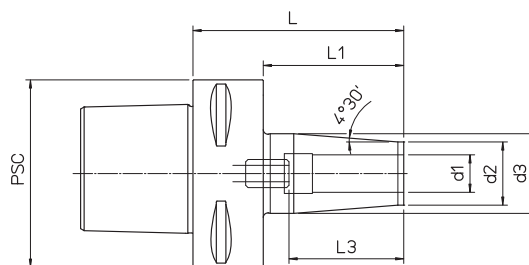


fig.1

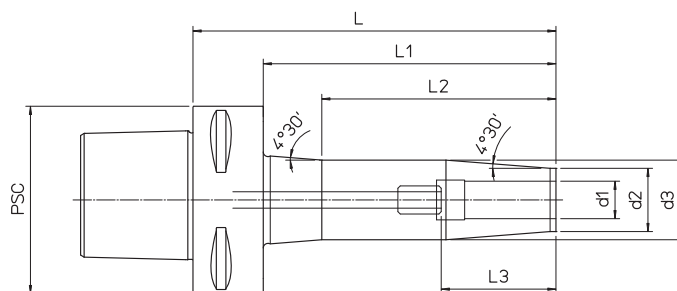


fig.2

215

PSC	REF.	CODE	d1	d2	d3	L	L1	L2	L3	kg	fig.		
80	PSC 80 CT06.80	71PSC-080CT0608	6	21	27	80	50	-	22 / 36	2.2	1		
	PSC 80 CT06.120	71PSC-080CT0612				120	90	2.4					
	PSC 80 CT06.160	71PSC-080CT0616				160	130	100		2.5			
	PSC 80 CT08.80	71PSC-080CT0808	8			24	32	80	50	-	26 / 36	2.2	1
	PSC 80 CT08.120	71PSC-080CT0812						120	90	2.4			
	PSC 80 CT08.160	71PSC-080CT0816						160	130	100		2.5	
	PSC 80 CT10.90	71PSC-080CT1009	10	27	34			90	60	-	31 / 41	2.3	1
	PSC 80 CT10.120	71PSC-080CT1012						120	90	2.5			
	PSC 80 CT10.160	71PSC-080CT1016						160	130	100		2.7	
	PSC 80 CT12.90	71PSC-080CT1209	12			33	42	90	60	-	36 / 46	2.3	1
	PSC 80 CT12.120	71PSC-080CT1212						120	90	2.5			
	PSC 80 CT12.160	71PSC-080CT1216						160	130	100		2.7	
	PSC 80 CT14.90	71PSC-080CT1409	14	44	53			90	60	-	39 / 49	2.3	1
	PSC 80 CT14.120	71PSC-080CT1412						120	90	2.5			
	PSC 80 CT14.160	71PSC-080CT1416						160	130	100		2.8	
	PSC 80 CT16.90	71PSC-080CT1609	16			55	61	90	60	-	41 / 51	2.3	1
	PSC 80 CT16.120	71PSC-080CT1612						120	90	2.5			
	PSC 80 CT16.160	71PSC-080CT1616						160	130	100		2.8	
	PSC 80 CT18.95	71PSC-080CT1809	18	66	71			95	65	-	47 / 57	2.5	1
	PSC 80 CT18.120	71PSC-080CT1812						120	90	2.8			
	PSC 80 CT18.160	71PSC-080CT1816						160	130	100		3.1	
	PSC 80 CT20.95	71PSC-080CT2009	20			77	82	95	65	-	51 / 61	2.5	1
	PSC 80 CT20.120	71PSC-080CT2012						120	90	2.8			
	PSC 80 CT20.160	71PSC-080CT2016						160	130	100		3.1	
PSC 80 CT25.120	71PSC-080CT2512	25	88	93	120			90	-	57 / 67	3.1	1	
PSC 80 CT25.160	71PSC-080CT2516				160			130	100		3.8		
PSC 80 CT32.120	71PSC-080CT3212	32			99			104	120	90	-	61 / 71	2.9
PSC 80 CT32.160	71PSC-080CT3216					160	130		100	3.5			





- SHRINK FIT CHUCKS
- SCHRUMPFSPANNFUTTER
- MANDRILA EMPALME TERMICO
- MANDRINS POUR FRETTAGE
- MANDRINI A CALETTAMENTO TERMICO

DIN 69871 AD+B40

CT

↗ 0.003

RPM 25.000

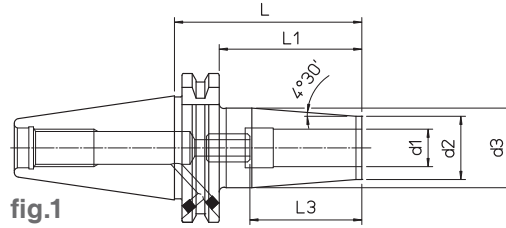


fig.1

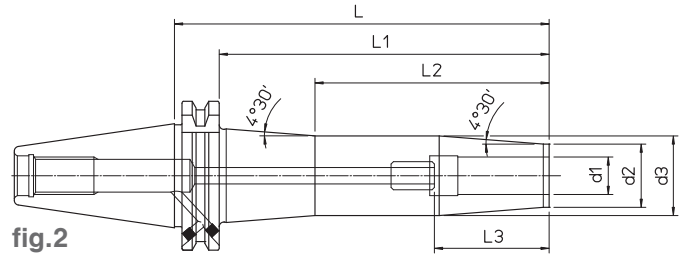


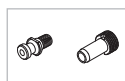
fig.2

DIN	REF.	CODE	d1	d2	d3	L	L1	L2	L3	kg	fig.
40	DIN69871-AD+B40 CT03.80	71DIN-B40CT0308	3	10	-	80	61	-	9	0.8	1
	DIN69871-AD+B40 CT04.80	71DIN-B40CT0408	4						12		
	DIN69871-AD+B40 CT05.80	71DIN-B40CT0508	5						15		
	DIN69871-AD+B40 CT06.80	71DIN-B40CT0608	6	21	27	120	101	100	22 / 36	1	1
	DIN69871-AD+B40 CT06.120	71DIN-B40CT0612								1.2	
	DIN69871-AD+B40 CT06.160	71DIN-B40CT0616								1.6	
	DIN69871-AD+B40 CT06.200	71DIN-B40CT0620	8	21	27	200	181	110	26 / 36	1.6	2
	DIN69871-AD+B40 CT08.80	71DIN-B40CT0808								0.8	
	DIN69871-AD+B40 CT08.120	71DIN-B40CT0812								1	
	DIN69871-AD+B40 CT08.160	71DIN-B40CT0816	1.2	26 / 36	2						
	DIN69871-AD+B40 CT08.200	71DIN-B40CT0820	1.6								
	DIN69871-AD+B40 CT10.80	71DIN-B40CT1008	0.8			31 / 41	1				
	DIN69871-AD+B40 CT10.120	71DIN-B40CT1012	1.1								
	DIN69871-AD+B40 CT10.160	71DIN-B40CT1016	1.4								
	DIN69871-AD+B40 CT10.200	71DIN-B40CT1020	1.8	36 / 46	2						
	DIN69871-AD+B40 CT12.80	71DIN-B40CT1208	0.9								
	DIN69871-AD+B40 CT12.120	71DIN-B40CT1212	1.1								
	DIN69871-AD+B40 CT12.160	71DIN-B40CT1216	1.3	36 / 46	2						
	DIN69871-AD+B40 CT12.200	71DIN-B40CT1220	1.8								
	DIN69871-AD+B40 CT14.80	71DIN-B40CT1408	0.9			36 / 46	1				
	DIN69871-AD+B40 CT14.120	71DIN-B40CT1412	1.1								
	DIN69871-AD+B40 CT14.160	71DIN-B40CT1416	1.4								
	DIN69871-AD+B40 CT16.80	71DIN-B40CT1608	0.9	27	34	80	61	-	39 / 49	0.9	1
	DIN69871-AD+B40 CT16.120	71DIN-B40CT1612	1.1								
DIN69871-AD+B40 CT16.160	71DIN-B40CT1616	1.4									
DIN69871-AD+B40 CT16.200	71DIN-B40CT1620	1.9	27	34	200	181	125	39 / 49	1.9	2	
DIN69871-AD+B40 CT18.80	71DIN-B40CT1808	1.1									
DIN69871-AD+B40 CT18.120	71DIN-B40CT1812	1.4									
DIN69871-AD+B40 CT18.160	71DIN-B40CT1816	1.8	33	42	160	141	100	39 / 49	1.8	2	
DIN69871-AD+B40 CT20.80	71DIN-B40CT2008	1.3									
DIN69871-AD+B40 CT20.120	71DIN-B40CT2012	1.4									
DIN69871-AD+B40 CT20.160	71DIN-B40CT2016	1.8	20	42	200	141	100	41 / 51	1.8	2	
DIN69871-AD+B40 CT20.200	71DIN-B40CT2020	2.4									
DIN69871-AD+B40 CT25.100	71DIN-B40CT2510	2.4									
DIN69871-AD+B40 CT25.100	71DIN-B40CT2510	1.8	25	44	53	100	81	-	47 / 57	1.8	1

249

240

223



- SHRINK FIT CHUCKS
- SCHRUMPFSPANNFUTTER
- MANDRILA EMPALME TERMICO
- MANDRINS POUR FRETTAGE
- MANDRINI A CALETTAMENTO TERMICO

↗ 0.003

RPM 12.000



DIN 69871 AD+B50

CT

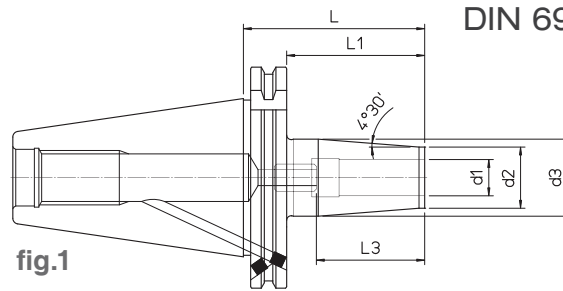


fig.1

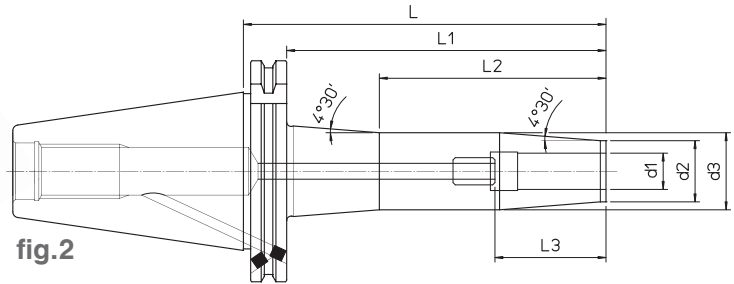


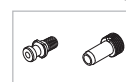
fig.2

DIN	REF.	CODE	d1	d2	d3	L	L1	L2	L3	kg	fig.
50	DIN69871-AD+B50 CT06.80	71DIN-B50CT0608	6	21	27	80	61	-	22 / 36	2.2	1
	DIN69871-AD+B50 CT06.120	71DIN-B50CT0612				120	101	-		2.4	
	DIN69871-AD+B50 CT06.160	71DIN-B50CT0616				160	141	100	2.5	2	
	DIN69871-AD+B50 CT06.200	71DIN-B50CT0620				200	181	110	3.4		
	DIN69871-AD+B50 CT08.80	71DIN-B50CT0808	8	21	27	80	61	-	26 / 36	2.2	1
	DIN69871-AD+B50 CT08.120	71DIN-B50CT0812				120	101	-		2.4	
	DIN69871-AD+B50 CT08.160	71DIN-B50CT0816				160	141	100	2.5	2	
	DIN69871-AD+B50 CT08.200	71DIN-B50CT0820				200	181	110	3.4		
	DIN69871-AD+B50 CT10.80	71DIN-B50CT1008	10	24	32	80	61	-	31 / 41	2.3	1
	DIN69871-AD+B50 CT10.120	71DIN-B50CT1012				120	101	-		2.5	
	DIN69871-AD+B50 CT10.160	71DIN-B50CT1016				160	141	100	2.7	2	
	DIN69871-AD+B50 CT10.200	71DIN-B50CT1020				200	181	125	3.6		
	DIN69871-AD+B50 CT12.80	71DIN-B50CT1208	12	24	32	80	61	-	36 / 46	2.3	1
	DIN69871-AD+B50 CT12.120	71DIN-B50CT1212				120	101	-		2.5	
	DIN69871-AD+B50 CT12.160	71DIN-B50CT1216				160	141	100	2.7	2	
	DIN69871-AD+B50 CT12.200	71DIN-B50CT1220				200	181	125	3.6		
	DIN69871-AD+B50 CT14.80	71DIN-B50CT1408	14	27	34	80	61	-	36 / 46	2.3	1
	DIN69871-AD+B50 CT14.120	71DIN-B50CT1412				120	101	-		2.5	
	DIN69871-AD+B50 CT14.160	71DIN-B50CT1416				160	141	100	2.8	2	
	DIN69871-AD+B50 CT16.80	71DIN-B50CT1608				16	27	34	80		61
	DIN69871-AD+B50 CT16.120	71DIN-B50CT1612	120	101	-				2.5		
	DIN69871-AD+B50 CT16.160	71DIN-B50CT1616	160	141	100				2.8	2	
	DIN69871-AD+B50 CT16.200	71DIN-B50CT1620	200	181	125				3.7		
	DIN69871-AD+B50 CT18.80	71DIN-B50CT1808	18	33	42	80	61	-	39 / 49	2.5	1
DIN69871-AD+B50 CT18.120	71DIN-B50CT1812	120				101	-	2.8			
DIN69871-AD+B50 CT18.160	71DIN-B50CT1816	160				141	100	3.1	2		
DIN69871-AD+B50 CT20.80	71DIN-B50CT2008	20				33	42	80		61	-
DIN69871-AD+B50 CT20.120	71DIN-B50CT2012		120	101	-			2.8			
DIN69871-AD+B50 CT20.160	71DIN-B50CT2016		160	141	100			3.1	2		
DIN69871-AD+B50 CT20.200	71DIN-B50CT2020		200	181	125			4.2			
DIN69871-AD+B50 CT25.120	71DIN-B50CT2512	25	44	53	120	101	-	47 / 57	3.1	1	
DIN69871-AD+B50 CT25.160	71DIN-B50CT2516				160	141	100		2.8		
DIN69871-AD+B50 CT25.200	71DIN-B50CT2520				200	181	125	5.2	2		
DIN69871-AD+B50 CT32.120	71DIN-B50CT3212	32	44	53	120	101	-	51 / 61		2.9	1
DIN69871-AD+B50 CT32.160	71DIN-B50CT3216				160	141	100		3.5	2	

223

240

249





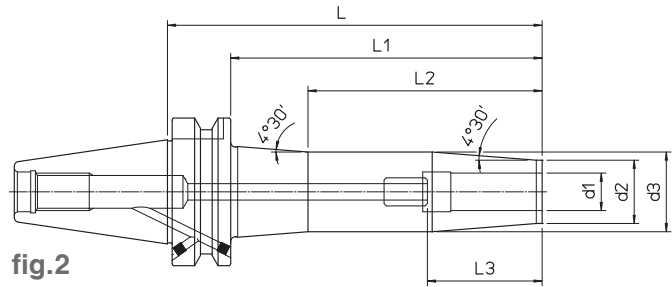
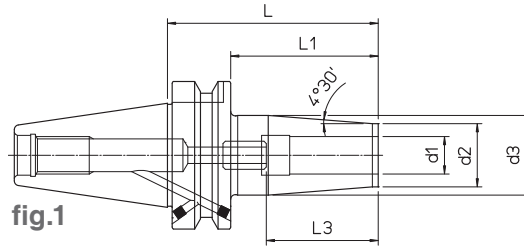
- SHRINK FIT CHUCKS
- SCHRUMPFSPANNFUTTER
- MANDRILA EMPALME TERMICO
- MANDRINS POUR FRETTAGE
- MANDRINI A CALETTAMENTO TERMICO

## MAS 403 BT40 AD+B

CT

0.003

RPM 25.000

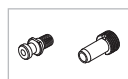


BT	REF.	CODE	d1	d2	d3	L	L1	L2	L3	kg	fig.	
40	MAS403 BT40-AD+B CT03.90	71MBT-B40CT0309	3	10	-	90	63	-	9	1	1	
	MAS403 BT40-AD+B CT04.90	71MBT-B40CT0409	4						12			
	MAS403 BT40-AD+B CT05.90	71MBT-B40CT0509	5						15			
	MAS403 BT40-AD+B CT06.90	71MBT-B40CT0609	6	21	27	120	93	-	22 / 36	0.8	1	
	MAS403 BT40-AD+B CT06.120	71MBT-B40CT0612								1		
	MAS403 BT40-AD+B CT06.160	71MBT-B40CT0616								1.2		
	MAS403 BT40-AD+B CT06.200	71MBT-B40CT0620	1.7	2								
	MAS403 BT40-AD+B CT08.90	71MBT-B40CT0809	8		21	27	90	63	-	26 / 36	0.8	1
	MAS403 BT40-AD+B CT08.120	71MBT-B40CT0812									1	
	MAS403 BT40-AD+B CT08.160	71MBT-B40CT0816		1.2								
	MAS403 BT40-AD+B CT08.200	71MBT-B40CT0820	1.7	2								
	MAS403 BT40-AD+B CT10.90	71MBT-B40CT1009	10		24	32	90	63	-	31 / 41	0.9	1
	MAS403 BT40-AD+B CT10.120	71MBT-B40CT1012									1.1	
	MAS403 BT40-AD+B CT10.160	71MBT-B40CT1016		1.4								
	MAS403 BT40-AD+B CT10.200	71MBT-B40CT1020	1.9	2								
	MAS403 BT40-AD+B CT12.90	71MBT-B40CT1209	12		24	32	90	63	-	36 / 46	0.9	1
	MAS403 BT40-AD+B CT12.120	71MBT-B40CT1212									1.1	
	MAS403 BT40-AD+B CT12.160	71MBT-B40CT1216		1.3								
	MAS403 BT40-AD+B CT12.200	71MBT-B40CT1220	1.9	2								
	MAS403 BT40-AD+B CT14.90	71MBT-B40CT1409	14		27	34	90	63	-	31 / 41	0.9	1
	MAS403 BT40-AD+B CT14.120	71MBT-B40CT1412									1.1	
	MAS403 BT40-AD+B CT14.160	71MBT-B40CT1416		1.4								
	MAS403 BT40-AD+B CT16.90	71MBT-B40CT1609	16	27	34	90	63	-	39 / 49	0.9	1	
	MAS403 BT40-AD+B CT16.120	71MBT-B40CT1612								1.1		
	MAS403 BT40-AD+B CT16.160	71MBT-B40CT1616								1.4		
	MAS403 BT40-AD+B CT16.200	71MBT-B40CT1620	2	2								
	MAS403 BT40-AD+B CT18.90	71MBT-B40CT1809	18		33	42	90	63	-	39 / 49	1.1	1
	MAS403 BT40-AD+B CT18.120	71MBT-B40CT1812									1.4	
	MAS403 BT40-AD+B CT18.160	71MBT-B40CT1816		1.8								
	MAS403 BT40-AD+B CT20.90	71MBT-B40CT2009	20	33	42	90	63	-	41 / 51	1.4	1	
MAS403 BT40-AD+B CT20.120	71MBT-B40CT2012	1.3										
MAS403 BT40-AD+B CT20.160	71MBT-B40CT2016	1.8										
MAS403 BT40-AD+B CT20.200	71MBT-B40CT2020	2.4	2									
MAS403 BT40-AD+B CT25.100	71MBT-B40CT2510	25		44	53	100	73	-	47 / 57	1.8	1	

249

240

223



- SHRINK FIT CHUCKS
- SCHRUMPFSPANNFUTTER
- MANDRILA EMPALME TERMICO
- MANDRINS POUR FRETTAGE
- MANDRINI A CALETTAMENTO TERMICO

## MAS 403 BT50 AD+B

CT

0.003

RPM 12.000

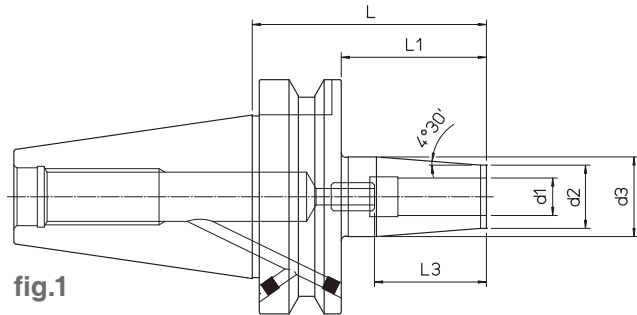


fig.1

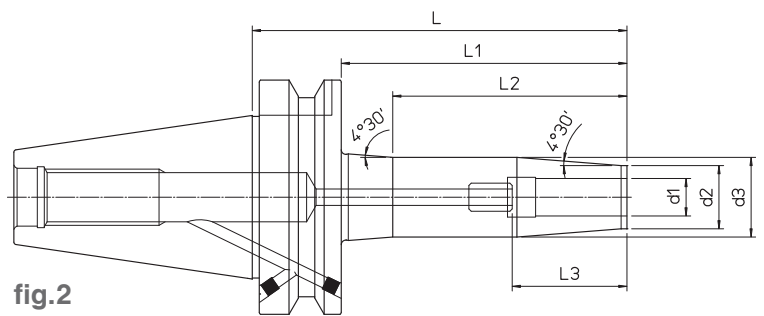


fig.2

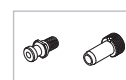
219

BT	REF.	CODE	d1	d2	d3	L	L1	L2	L3	kg	fig.
50	MAS403 BT50-AD+B CT06.100	71MBT-B50CT0610	6	21	27	100	62	-	22 / 36	2.2	1
	MAS403 BT50-AD+B CT06.160	71MBT-B50CT0616				160	122	100		2.5	2
	MAS403 BT50-AD+B CT06.200	71MBT-B50CT0620				200	162	110		4.2	2
	MAS403 BT50-AD+B CT08.100	71MBT-B50CT0810	8	24	32	100	62	-	26 / 36	2.2	1
	MAS403 BT50-AD+B CT08.160	71MBT-B50CT0816				160	122	100		2.5	2
	MAS403 BT50-AD+B CT08.200	71MBT-B50CT0820				200	162	110		4.2	2
	MAS403 BT50-AD+B CT10.100	71MBT-B50CT1010	10	24	32	100	62	-	31 / 41	2.3	1
	MAS403 BT50-AD+B CT10.160	71MBT-B50CT1016				160	122	100		2.7	2
	MAS403 BT50-AD+B CT10.200	71MBT-B50CT1020				200	162	125		4.4	2
	MAS403 BT50-AD+B CT12.100	71MBT-B50CT1210	12	27	34	100	62	-	36 / 46	2.3	1
	MAS403 BT50-AD+B CT12.160	71MBT-B50CT1216				160	122	100		2.7	2
	MAS403 BT50-AD+B CT12.200	71MBT-B50CT1220				200	162	125		4.4	2
	MAS403 BT50-AD+B CT14.100	71MBT-B50CT1410	14	27	34	100	62	-	36 / 46	2.3	1
	MAS403 BT50-AD+B CT14.160	71MBT-B50CT1416				160	122	100		2.8	2
	MAS403 BT50-AD+B CT16.100	71MBT-B50CT1610				16	33	42		100	62
	MAS403 BT50-AD+B CT16.160	71MBT-B50CT1616	160	122	100				2.8	2	
	MAS403 BT50-AD+B CT16.200	71MBT-B50CT1620	200	162	125				4.5	2	
	MAS403 BT50-AD+B CT18.100	71MBT-B50CT1810	18	33	42	100	62	-	39 / 49	2.5	1
	MAS403 BT50-AD+B CT18.160	71MBT-B50CT1816				160	122	100		3.1	2
	MAS403 BT50-AD+B CT20.120	71MBT-B50CT2012				20	44	53		120	82
MAS403 BT50-AD+B CT20.160	71MBT-B50CT2016	160	122	100	3.1				2		
MAS403 BT50-AD+B CT20.200	71MBT-B50CT2020	200	162	125	4.9				2		
MAS403 BT50-AD+B CT25.120	71MBT-B50CT2512	25	44	53	120	82	-	47 / 57	3.1	1	
MAS403 BT50-AD+B CT25.160	71MBT-B50CT2516				160	122	100		3.8	2	
MAS403 BT50-AD+B CT25.200	71MBT-B50CT2520				200	162	125		5.8	2	
MAS403 BT50-AD+B CT32.120	71MBT-B50CT3212	32	44	53	120	82	-	51 / 61	2.9	1	
MAS403 BT50-AD+B CT32.160	71MBT-B50CT3216				160	122	100		3.5	2	

223

240

249



- SHRINK FIT EXTENSIONS
- SCHRUMPFVERLÄNGERUNGEN
- ENCHUFE ALARGADOR CON ACOPLAMIENTO TÉRMICO.
- RALLONGES À FRETTEGE THERMIQUE
- PROLUNGHE A CALETTAMENTO TERMICO

PR CT N



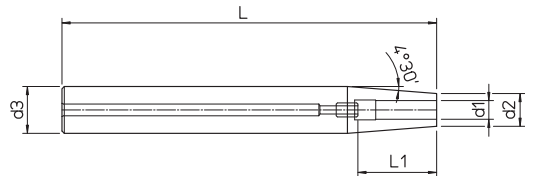
220

REF.	CODE	d1	d2	d3	L	kg
PR.CT.N D12.03.160	49DC11612030	3	8	12	160	0.09
PR.CT.N D12.04.160	49DC11612040	4				
PR.CT.N D16.03.160	49DC11616030	3	10	16		0.14
PR.CT.N D16.04.160	49DC11616040	4				
PR.CT.N D16.05.160	49DC11616050	5	12	16		0.15
PR.CT.N D16.06.160	49DC11616060	6				
PR.CT.N D16.08.160	49DC11616080	8	14	20		0.16
PR.CT.N D20.05.160	49DC11620050	5				
PR.CT.N D20.06.160	49DC11620060	6	16	20		0.27
PR.CT.N D20.08.160	49DC11620080	8				
PR.CT.N D20.10.160	49DC11620100	10	18	20		0.26
PR.CT.N D20.12.160	49DC11620120	12				



- SHRINK FIT EXTENSIONS WITH AXIAL ADJUSTMENT
- SCHRUMPFVERLÄNGERUNG MIT AXIALER EINSTELLUNG
- ENCHUFE ALARGADOR CON ACOPLAMIENTO TÉRMICO DE REGULACIÓN AXIAL
- RALLONGES À FRETAGE THERMIQUE À RÉGLAGE AXIAL
- PROLUNGHE A CALETTAMENTO TERMICO A REGOLAZIONE ASSIALE

PR CT R



221

REF.	CODE	d1	d2	d3	L	L1	kg	
PR.CT.R D16.06.130	49DC21316060	6	10	16	130	22 / 36	0.18	
PR.CT.R D16.06.160	49DC21616060				160		0.17	
PR.CT.R D20.06.130	49DC21320060				130		0.20	
PR.CT.R D20.08.130	49DC21320080	8	14	20	130	22 / 32	0.25	
PR.CT.R D20.06.160	49DC21620060	6					0.33	
PR.CT.R D20.08.160	49DC21620080	8					0.32	
PR.CT.R D25.10.130	49DC21325100	10	20	25	130	31 / 41	0.40	
PR.CT.R D25.12.130	49DC21325120	12					0.37	
PR.CT.R D25.16.130	49DC21325160	16					0.32	
PR.CT.R D25.08.160	49DC21625080	8	19	20	160	26 / 36	0.53	
PR.CT.R D25.10.160	49DC21625100	10					0.51	
PR.CT.R D25.12.160	49DC21625120	12					0.48	
PR.CT.R D25.14.160	49DC21625140	14	22	25	160	36 / 46	0.47	
PR.CT.R D25.16.160	49DC21625160	16					0.43	
PR.CT.R D25.08.200	49DC22025080	8					19	200
PR.CT.R D25.10.200	49DC22025100	10	20	31 / 41	0.64			
PR.CT.R D25.12.200	49DC22025120	12		36 / 46	0.60			
PR.CT.R D25.16.200	49DC22025160	16	22	27	32	160	0.52	
PR.CT.R D32.16.160	49DC21632160	18	20				39 / 49	0.78
PR.CT.R D32.18.160	49DC21632180							0.77
PR.CT.R D32.20.160	49DC21632200			20	200	41 / 51		0.67
PR.CT.R D32.16.200	49DC22032160	16	39 / 49	1.81				
PR.CT.R D32.20.200	49DC22032200	20	41 / 51	0.87				

