

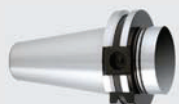
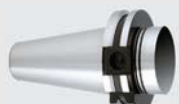
p. 240



p. 240



p. 240



p. 178 DIN 69893 HSK-A

p. 179 ISO 26623-1 PSC

p. 180 DIN 69871 AD+B

p. 181 MAS 403 BT AD+B

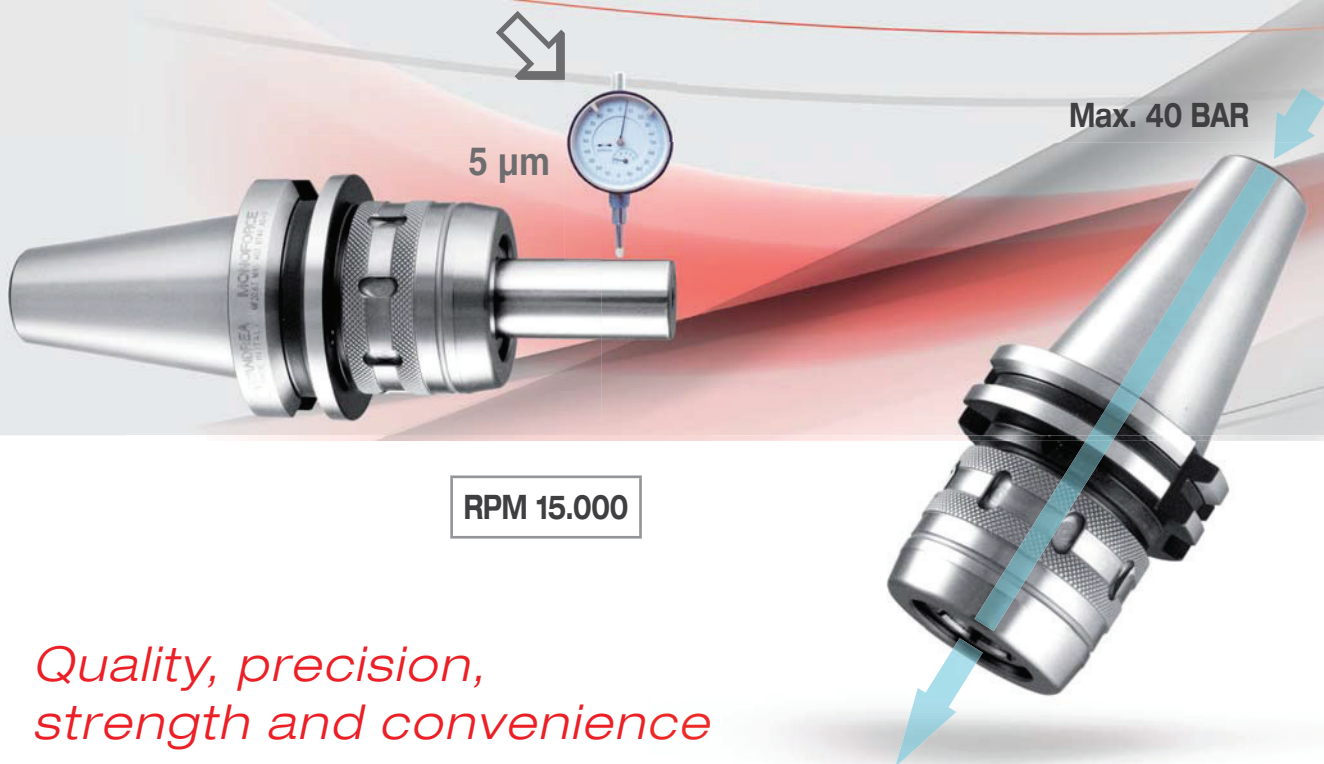
p. 182 DIN 69871 AD+B FC  
FACE CONTACT

p. 183 MAS 403 BT AD+B FC  
FACE CONTACT

#### KIT MONOFORCE

p. 178 HSK  
p. 179 PSC  
p. 180 DIN  
p. 181 BT  
p. 182 DIN FACE CONTACT  
p. 183 BT FACE CONTACT





*Quality, precision,  
strength and convenience*

- HIGH PRECISION ULTRA-TIGHT TOOLHOLDER
- PRÄZISIONSSPANNZANGENFUTTER MIT HOCHFESTER WERKZEUGSPANNUNG
- PORTAHERRAMIENTAS DE PRECISIÓN DE FUERTE BLOCAJE
- PORTE-OUTIL DE PRÉCISION À SERRAGE FORT
- PORTAUTENSILE DI PRECISIONE A FORTE SERRAGGIO

**GB MONOforce** is a addition to D'Andrea range of tool holders, which complements the existing balanceable FORCE chuck from Toprun family. This new chuck provides an economical and innovative solution for tool holding, where precision and high clamping forces for the cutting tool are required. MONOforce is available with tapers conforming to DIN 69871, MAS-BT, in ISO 40 and ISO 50 sizes, and also HSK 63 and 100, ISO 26623-1 PSC 63 and 80. The chuck accepts reduction bushes to suit cutters having shank sizes ranging from Ø 3 mm. to Ø 25 mm. MONOforce can also be supplied in kit form, which includes of a set of reduction bushes and clamping wrench. MONOforce toolholders are manufactured by D'Andrea in their modern manufacturing plants in Italy.

**D MONOforce** ist eine Ergänzung zur D'Andrea Werkzeughalterserie und komplettiert die bestehende auswuchtbare FORCE-Spannzange aus der Toprun-Familie. Dieses neue innovative und wirtschaftliche Aufnahmefutter ist ausgelegt für Werkzeugspannungen, bei denen höchste Präzision und Spannkraft zur Klemmung von Fräsworkzeugen gefordert ist. MONOforce ist erhältlich mit Aufnahmekegeln nach DIN 69871, MAS-BT, in ISO 40 und ISO 50 Ausführung sowie als HSK 63 und 100, ISO 26623-1 PSC 63 und 80. Das Futter kann mittels Reduzierhülsen für Fräser von Ø 3 - 25 mm eingesetzt werden. MONOforce wird auch als Set angeboten inklusive Reduzierhülsen und Klemmschrauben. Alle MONOforce-Werkzeughalter werden in den modernen Produktionsstätten von D'Andrea in Italien hergestellt.

**E MONOforce** representa la solución ideal y económica para el equipamiento de todas las Máquinas Herramientas donde existen exigencias de precisión y necesidad de bloqueo de herramientas que necesitan elevadas cargas de torsión. MONOforce acompaña al ya famoso Force de la familia Toprun, el sistema patentado de portaherramientas integrales equilibrables. El programa MONOforce para husillos maquina HSK 63 y 100, ISO 26623-1 PSC 63 y 80, DIN 69871 y MAS-BT está realizado en los tamaños ISO 40 y ISO 50 con pinzas de reducción de Ø 12 mm, Ø 20 mm y de Ø 32 mm disponibles estándar en toda la gamma diametral compatible con estos diámetros de alojamientos para bloqueo de Ø 3 mm a Ø 25 mm. Los portaherramientas MONOforce, enteramente producidos por D'Andrea, están disponibles también en prácticos Kits completos con pinzas de reducción y llaves de bloqueo.

**F Le MONOforce** vient agrandir la série de produits D'Andréa dans la gamme des attachements appartenant à la famille Toprun et concernant les attachements équilibrables Force. Ce nouvel attachement est une solution économique et innovatrice dans le domaine des outils de serrage où précision et grande force de clamage sont nécessaires pour les outils coupants. MONOforce est disponible avec des cônes conformément aux normes DIN 69871, MAS-BT toutes les deux en ISO 40, 50 et également HSK 63 et 100, ISO 26623-1 PSC 63 et 80. Les attachements acceptent des pinces de réduction afin de pouvoir appliquer des outils coupants ayant des queues entre Ø 3 et Ø 25 mm. MONOforce peut être fourni en kit, comprenant un set de pinces de réduction ainsi que la clé de serrage. Les attachements MONOforce sont fabriqués par D'Andréa dans leur nouvelle usine située en Italie.

**I MONOforce** rappresenta la soluzione ideale ed economica per l'attrezzatura di tutte le macchine utensili ove sussistano esigenze di precisione e necessità di serraggio utensili sollecitati a elevati carichi torsionali. MONOforce si affianca al già noto Force della famiglia Toprun, il sistema brevettato di portautensili integrali bilanciabili. Il programma MONOforce è costruito nella versione per mandrini macchina HSK 63 e 100, ISO 26623-1 PSC 63 e 80, nonché DIN 69871 e MAS-BT realizzati nelle grandezze ISO 40 e 50 e permette l'impiego di bussole di riduzione da Ø 12 mm, Ø 20 mm e Ø 32 mm. disponibili standard in tutta la gamma diametrale compatibile con questi diametri d'alloggiamento per serraggi da Ø 3 mm a Ø 25 mm. I portautensili MONOforce – interamente prodotti dalla D'Andrea – sono disponibili anche in pratici kit completi di bussole di riduzione e chiave di serraggio.

- HIGH PRECISION ULTRA-TIGHT TOOLHOLDER
- PRÄZISIONSSPANNZANGENFUTTER MIT HOCHFESTER WERKZEUGSPANNUNG
- PORTAHERRAMIENTAS DE PRECISIÓN DE FUERTE BLOCAJE
- PORTE-OUTIL DE PRÉCISION À SERRAGE FORT
- PORTAUTENSILE DI PRECISIONE A FORTE SERRAGGIO

## DIN 69893 HSK-A

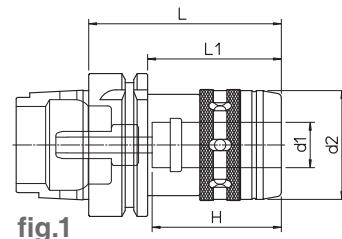


fig.1

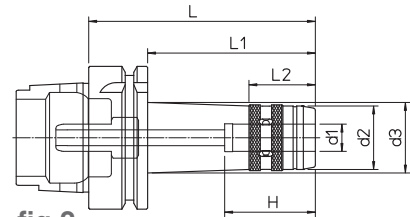


fig.2

- Supplied with coolant tube - without clamping wrench
- Lieferung inklusive Kühlmittelrohr. Ohne Spannzangen und Spannschlüssel.
- Completo con racor para el refrigerante - Llave de apriete excluida
- Pourvu de raccord pour liquide d'arrosage - Sans clef de serrage
- Completo di raccordo per il refrigerante - chiave di serraggio esclusa

HSK-A	REF.	CODE	d1	d2	d3	H	L	L1	L2	kg	fig.
63	HSK-A63 MF12.70	71HSK-A63MF1207	12	28	-	46	70	44	-	0.8	1
	HSK-A63 MF12.100	71HSK-A63MF1210			32		100	74	29.5	1.1	2
	HSK-A63 MF20.85	71HSK-A63MF2008	20	48	-	60	85	59	-	1.2	1
	HSK-A63 MF20.125	71HSK-A63MF2012					125	99		1.7	2
	HSK-A63 MF32.105	71HSK-A63MF3210	32	66	-	80	105	-	-	2	1
	HSK-A63 MF32.140	71HSK-A63MF3214					140	-		2.6	2
HSK-A100 MF32.110	71HSKA100MF3211	110					81	3.1		1	
HSK-A100 MF32.160	71HSKA100MF3216	160					131	3.6			

## KIT K01 HSK-A63



### K01 MONOforce 12 K01 MONOforce 20 KIT K01 MONOforce 32

1 MONOforce 12	1 MONOforce 20	1 MONOforce 32
1 RC 12.04	1 RC 20.06	1 RC 32.06
1 RC 12.06	1 RC 20.08	1 RC 32.08
1 RC 12.08	1 RC 20.10	1 RC 32.10
1 RC 12.10	1 RC 20.12	1 RC 32.12
1 CHV 28	1 RC 20.16	1 RC 32.16
	1 CHV 50	1 RC 32.20
		1 RC 32.25
		1 CHV 75

HSK-A	REF.	CODE
63	KIT K01 MONOFORCE 12.70 HSK63	7KHSK-A63MF1207
	KIT K01 MONOFORCE 20.85 HSK63	7KHSK-A63MF2008
	KIT K01 MONOFORCE 32.105 HSK63	7KHSK-A63MF3210

## KIT K01 HSK-A100



### K01 MONOforce 20 KIT K01 MONOforce 32

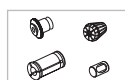
1 MONOforce 20	1 MONOforce 32
1 RC 20.06	1 RC 32.06
1 RC 20.08	1 RC 32.08
1 RC 20.10	1 RC 32.10
1 RC 20.12	1 RC 32.12
1 RC 20.16	1 RC 32.16
1 CHV 50	1 RC 32.20
	1 RC 32.25
	1 CHV 75

HSK-A	REF.	CODE
100	KIT K01 MONOFORCE 32.110 HSK100	7KHKA100MF3211

248



241



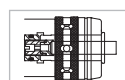
240



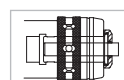
222



222



222



- HIGH PRECISION ULTRA-TIGHT TOOLHOLDER
- PRÄZISIONSSPANNZANGENFUTTER MIT HOCHFESTER WERKZEUGSPANNUNG
- PORTAHERRAMIENTAS DE PRECISIÓN DE FUERTE BLOCAJE
- PORTE-OUTIL DE PRÉCISION À SERRAGE FORT
- PORTAUTENSILE DI PRECISIONE A FORTE SERRAGGIO

## ISO 26623-1 PSC

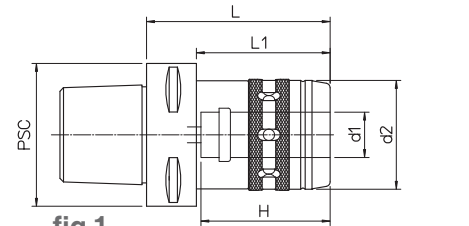


fig.1

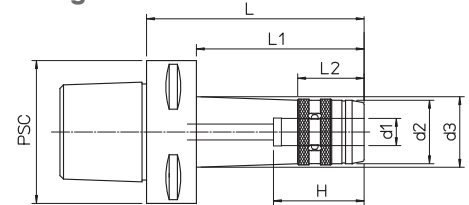


fig.2

- Without clamping wrench
- Ohne Spannschlüssel.
- Llave de apriete excluida
- Sans clef de serrage
- Chiave di serraggio esclusa

PSC	REF.	CODE	d <sub>1</sub>	d <sub>2</sub>	d <sub>3</sub>	H	L	L <sub>1</sub>	L <sub>2</sub>	kg	fig.	
63	PSC 63 - MF 12.70	71PSC-063MF1207	12	28	-	46	70	48	-	0.9	1	
	PSC 63 - MF 12.100	71PSC-063MF1210			31.5		100	78	29.5	1.4	2	
	PSC 63 - MF 20.80	71PSC-063MF2008	20	48	-		80	58	-	1.3	1	
	PSC 63 - MF 20.120	71PSC-063MF2012					120	98		1.9	2	
	PSC 63 - MF 32.100	71PSC-063MF3210	32	66			80	100		-	2.1	1
	PSC 63 - MF 32.140	71PSC-063MF3214					140	-		3.1	2	
80	PSC 80 - MF 20.80	71PSC-080MF2008	20	48		-	80	50		-	3.7	1
	PSC 80 - MF 20.125	71PSC-080MF2012					125	95			4.1	2
	PSC 80 - MF 32.100	71PSC-080MF3210	32	66	80		70	4.4	1			
	PSC 80 - MF 32.160	71PSC-080MF3216			160		130	4.9	2			



### KIT K01 MONOFORCE 12.70 PSC 63

1 MONOforce 12	1 MONOforce 20	1 MONOforce 32
1 RC 12.04	1 RC 20.06	1 RC 32.06
1 RC 12.06	1 RC 20.08	1 RC 32.08
1 RC 12.08	1 RC 20.10	1 RC 32.10
1 RC 12.10	1 RC 20.12	1 RC 32.12
1 CHV 28	1 RC 20.16	1 RC 32.16
	1 CHV 50	1 RC 32.20
		1 RC 32.25
		1 CHV 75

PSC	REF.	CODE
63	KIT K01 MONOFORCE 12.70 PSC 63	7KPSC-063MF1207
	KIT K01 MONOFORCE 20.80 PSC 63	7KPSC-063MF2008
	KIT K01 MONOFORCE 32.100 PSC 63	7KPSC-063MF3210

## KIT K01

### ISO 26623-1 PSC 63



### KIT K01 MONOFORCE 20.80 PSC 80

1 MONOforce 20	1 MONOforce 32
1 RC 20.06	1 RC 32.06
1 RC 20.08	1 RC 32.08
1 RC 20.10	1 RC 32.10
1 RC 20.12	1 RC 32.12
1 RC 20.16	1 RC 32.16
1 CHV 50	1 RC 32.20
	1 RC 32.25
	1 CHV 75

PSC	REF.	CODE
80	KIT K01 MONOFORCE 20.80 PSC 80	7KPSC-080MF2008
	KIT K01 MONOFORCE 32.100 PSC 80	7KPSC-080MF3210

## KIT K01

### ISO 26623-1 PSC 80

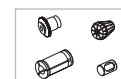
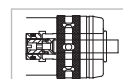
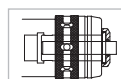
222

222

222

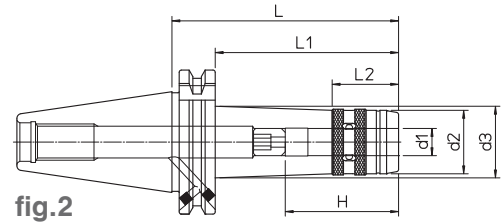
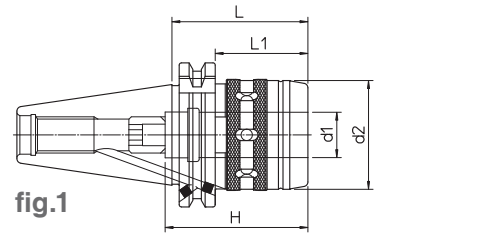
241

252



- HIGH PRECISION ULTRA-TIGHT TOOLHOLDER
- PRÄZISIONSSPANNANGENFUTTER MIT HOCHFESTER WERKZEUGSPANNUNG
- PORTAHERRAMIENTAS DE PRECISIÓN DE FUERTE BLOCAJE
- PORTE-OUTIL DE PRÉCISION À SERRAGE FORT
- PORTAUTENSILE DI PRECISIONE A FORTE SERRAGGIO

## DIN 69871 AD+B



- Without clamping wrench
- Ohne Spannschlüssel.
- Llave de apriete excluida
- Sans clef de serrage
- Chiave di serraggio esclusa

DIN	REF.	CODE	d1	d2	d3	H	L	L1	L2	kg	fig.	
40	DIN69871-AD+B40 MF12.50	71DIN-B40MF1205	12	28	-	46	50	31	-	0.8	1	
	DIN69871-AD+B40 MF12.100	71DIN-B40MF1210			32		100	81	29.5	1.2	2	
	DIN69871-AD+B40 MF20.60	71DIN-B40MF2006	20	48	-	63	60	41	-	1.1	1	
	DIN69871-AD+B40 MF20.100	71DIN-B40MF2010					100	81	-	1.4	2	
	DIN69871-AD+B40 MF32.95	71DIN-B40MF3209	32	66		80	95	-	-	1.6	1	
	DIN69871-AD+B40 MF32.140	71DIN-B40MF3214					140	-	-	2.0	2	
50	DIN69871-AD+B50 MF20.80	71DIN-B50MF2008	20	48		-	63	80	61	-	2.3	1
	DIN69871-AD+B50 MF20.125	71DIN-B50MF2012						125	106	-	2.7	2
	DIN69871-AD+B50 MF32.75	71DIN-B50MF3207	32	66	90		75	56	-	2.8	1	
	DIN69871-AD+B50 MF32.160	71DIN-B50MF3216					160	141	-	3.2	2	



### K01 MONOforce 12 K01 MONOforce 20 KIT K01 MONOforce 32

1 MONOforce 12	1 MONOforce 20	1 MONOforce 32
1 RC 12.04	1 RC 20.06	1 RC 32.06
1 RC 12.06	1 RC 20.08	1 RC 32.08
1 RC 12.08	1 RC 20.10	1 RC 32.10
1 RC 12.10	1 RC 20.12	1 RC 32.12
1 CHV 28	1 RC 20.16	1 RC 32.16
	1 CHV 50	1 RC 32.20
		1 RC 32.25
		1 CHV 75

### KIT K01 DIN-A40

DIN	REF.	CODE
40	KIT K01 MONOFORCE 12.50 DIN40AD+B	7KDIN-B40MF1205
	KIT K01 MONOFORCE 20.60 DIN40AD+B	7KDIN-B40MF2006
	KIT K01 MONOFORCE 32.95 DIN40AD+B	7KDIN-B40MF3209



### K01 MONOforce 20 KIT K01 MONOforce 32

1 MONOforce 20	1 MONOforce 32
1 RC 20.06	1 RC 32.06
1 RC 20.08	1 RC 32.08
1 RC 20.10	1 RC 32.10
1 RC 20.12	1 RC 32.12
1 RC 20.16	1 RC 32.16
1 CHV 50	1 RC 32.20
	1 RC 32.25
	1 CHV 75

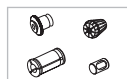
### KIT K01 DIN-A50

DIN	REF.	CODE
50	KIT K01 MONOFORCE 20.80 DIN50AD+B	7KDIN-B50MF2008
	KIT K01 MONOFORCE 32.75 DIN50AD+B	7KDIN-B50MF3207

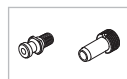
249



241



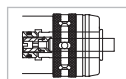
240



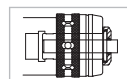
222



222



222



- HIGH PRECISION ULTRA-TIGHT TOOLHOLDER
- PRÄZISIONSSPANNZANGENFUTTER MIT HOCHFESTER WERKZEUGSPANNUNG
- PORTAHERRAMIENTAS DE PRECISIÓN DE FUERTE BLOCAJE
- PORTE-OUTIL DE PRÉCISION À SERRAGE FORT
- PORTAUTENSILE DI PRECISIONE A FORTE SERRAGGIO

## MAS 403 BT AD+B



- Without clamping wrench
- Ohne Spannschlüssel.
- Llave de apriete excluida
- Sans clef de serrage
- Chiave di serraggio esclusa

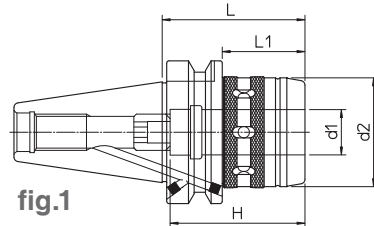


fig.1

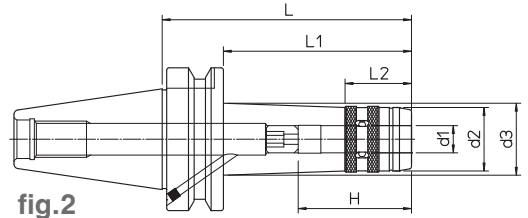


fig.2

BT	REF.	CODE	d1	d2	d3	H	L	L1	L2	kg	fig.		
40	MAS403 BT40-AD+B MF12.60	71MBT-B40MF1206	12	28	-	46	60	33	-	0.9	1		
	MAS403 BT40-AD+B MF12.100	71MBT-B40MF1210			32		100	73	29.5		1.4	2	
	MAS403 BT40-AD+B MF20.63	71MBT-B40MF2006	20	48	-	63	63	36	-	1.3	1		
	MAS403 BT40-AD+B MF20.100	71MBT-B40MF2010					100	73			1.9	2	
	MAS403 BT40-AD+B MF32.90	71MBT-B40MF3209	32	66		80	90	-		2.1	1		
	MAS403 BT40-AD+B MF32.140	71MBT-B40MF3214				140	-	3.1		2			
50	MAS403 BT50-AD+B MF20.85	71MBT-B50MF2008	20	48		-	63	85		47	-	3.7	1
	MAS403 BT50-AD+B MF20.125	71MBT-B50MF2012						125		87			4.1
	MAS403 BT50-AD+B MF32.95	71MBT-B50MF3209	32	66	90		95	57	4.4	1			
	MAS403 BT50-AD+B MF32.160	71MBT-B50MF3216			160		122	4.9	2				



### K01 MONOforce 12 K01 MONOforce 20 KIT K01 MONOforce 32

1 MONOforce 12	1 MONOforce 20	1 MONOforce 32
1 RC 12.04	1 RC 20.06	1 RC 32.06
1 RC 12.06	1 RC 20.08	1 RC 32.08
1 RC 12.08	1 RC 20.10	1 RC 32.10
1 RC 12.10	1 RC 20.12	1 RC 32.12
1 CHV 28	1 RC 20.16	1 RC 32.16
	1 CHV 50	1 RC 32.20
		1 RC 32.25
		1 CHV 75

### KIT K01 BT 40

BT	REF.	CODE
40	KIT K01 MONOFORCE 12.60 BT40AD+B	7KMBT-B40MF1206
	KIT K01 MONOFORCE 20.63 BT40AD+B	7KMBT-B40MF2006
	KIT K01 MONOFORCE 32.90 BT40AD+B	7KMBT-B40MF3209

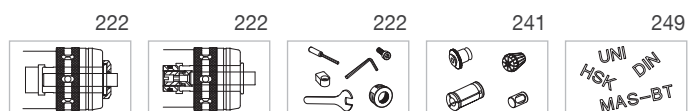


### K01 MONOforce 20 KIT K01 MONOforce 32

1 MONOforce 20	1 MONOforce 32
1 RC 20.06	1 RC 32.06
1 RC 20.08	1 RC 32.08
1 RC 20.10	1 RC 32.10
1 RC 20.12	1 RC 32.12
1 RC 20.16	1 RC 32.16
1 CHV 50	1 RC 32.20
	1 RC 32.25
	1 CHV 75

### KIT K01 BT 50

BT	REF.	CODE
50	KIT K01 MONOFORCE 20.85 BT50AD+B	7KMBT-B50MF2008
	KIT K01 MONOFORCE 32.95 BT50AD+B	7KMBT-B50MF3209



# D'ANDREA

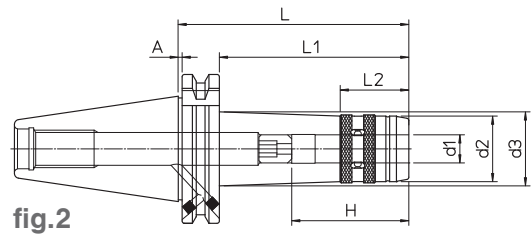
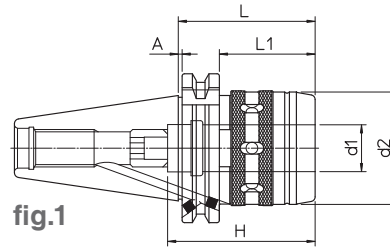
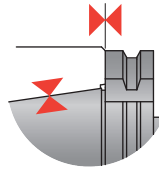
## MONOforce

### FACE CONTACT

- HIGH PRECISION ULTRA-TIGHT TOOLHOLDER
- PRÄZISIONSSPANNZANGENFUTTER MIT HOCHFESTER WERKZEUGSPANNUNG
- PORTAHERRAMIENTAS DE PRECISIÓN DE FUERTE BLOCAJE
- PORTE-OUTIL DE PRÉCISION À SERRAGE FORT
- PORTAUTENSILE DI PRECISIONE A FORTE SERRAGGIO

### DIN 69871 FC

#### FACE CONTACT AD+B



- Without clamping wrench
- Ohne Spannschlüssel.
- Llave de apriete excluida
- Sans clef de serrage
- Chiave di serraggio esclusa

DIN	REF.	CODE	d1	d2	d3	H	A	L	L1	L2	kg	fig.		
40	DIN69871-AD+B40 FC MF12.50	71DIF-B40MF1205	12	28	-	46	1	50	31	-	0.8	1		
	DIN69871-AD+B40 FC MF12.100	71DIF-B40MF1210			32					29.5			1.2	2
	DIN69871-AD+B40 FC MF20.60	71DIF-B40MF2006	20	48	-					63	60	41	1.1	1
	DIN69871-AD+B40 FC MF20.100	71DIF-B40MF2010			100					81	1.4	2		
	DIN69871-AD+B40 FC MF32.95	71DIF-B40MF3209	32	66	-					80	95	-	1.6	1
	DIN69871-AD+B40 FC MF32.140	71DIF-B40MF3214			140					-	2.0	2		
50	DIN69871-AD+B50 FC MF20.80	71DIF-B50MF2008	20	48	-	63	1.5	80	61	-	2.3	1		
	DIN69871-AD+B50 FC MF20.125	71DIF-B50MF2012			125					106	2.7	2		
	DIN69871-AD+B50 FC MF32.75	71DIF-B50MF3207	32	66	-					90	75	56	2.8	1
	DIN69871-AD+B50 FC MF32.160	71DIF-B50MF3216			160					141	3.2	2		



#### K01 MONOforce 12 FC K01 MONOforce 20 FC K01 MONOforce 32 FC

1 MONOforce 12	1 MONOforce 20	1 MONOforce 32
1 RC 12.04	1 RC 20.06	1 RC 32.06
1 RC 12.06	1 RC 20.08	1 RC 32.08
1 RC 12.08	1 RC 20.10	1 RC 32.10
1 RC 12.10	1 RC 20.12	1 RC 32.12
1 CHV 28	1 RC 20.16	1 RC 32.16
	1 CHV 50	1 RC 32.20
		1 RC 32.25
		1 CHV 75

#### KIT K01

#### DIN-A40

DIN	REF.	CODE
40	KIT K01 MONOFORCE 12.50 DIN40AD+B FC	7KDIF-B40MF1205
	KIT K01 MONOFORCE 20.60 DIN40AD+B FC	7KDIF-B40MF2006
	KIT K01 MONOFORCE 32.95 DIN40AD+B FC	7KDIF-B40MF3209



#### K01 MONOforce 20 FC K01 MONOforce 32 FC

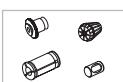
1 MONOforce 20	1 MONOforce 32
1 RC 20.06	1 RC 32.06
1 RC 20.08	1 RC 32.08
1 RC 20.10	1 RC 32.10
1 RC 20.12	1 RC 32.12
1 RC 20.16	1 RC 32.16
1 CHV 50	1 RC 32.20
	1 RC 32.25
	1 CHV 75

#### KIT K01

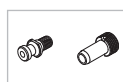
#### DIN-A50

DIN	REF.	CODE
50	KIT K01 MONOFORCE 20.80 DIN50AD+B FC	7KDIF-B50MF2008
	KIT K01 MONOFORCE 32.75 DIN50AD+B FC	7KDIF-B50MF3207

241



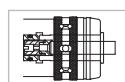
240



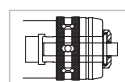
222



222



222



- HIGH PRECISION ULTRA-TIGHT TOOLHOLDER
- PRÄZISIONSSPANNZANGENFUTTER MIT HOCHFESTER WERKZEUGSPANNUNG
- PORTAHERRAMIENTAS DE PRECISIÓN DE FUERTE BLOCAJE
- PORTE-OUTIL DE PRÉCISION À SERRAGE FORT
- PORTAUTENSILE DI PRECISIONE A FORTE SERRAGGIO

## MAS 403 BT FC FACE CONTACT AD+B

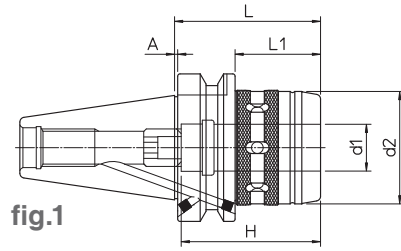
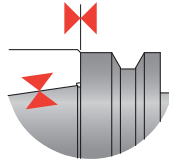


fig.1

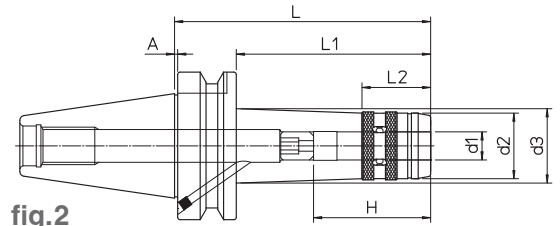


fig.2

- Without clamping wrench
- Ohne Spannschlüssel.
- Llave de apriete excluida
- Sans clef de serrage
- Chiave di serraggio esclusa

BT	REF.	CODE	d1	d2	d3	H	A	L	L1	L2	kg	fig.								
40	MAS403 BT40 FC AD+B MF12.60	71MBF-B40MF1206	12	28	-	46	1	60	33	-	0.9	1								
	MAS403 BT40 FC AD+B MF12.100	71MBF-B40MF1210			32					29.5			1.4	2						
	MAS403 BT40 FC AD+B MF20.63	71MBF-B40MF2006	20	48	-	63				36	1.3	1								
	MAS403 BT40 FC AD+B MF20.100	71MBF-B40MF2010								73			1.9	2						
	MAS403 BT40 FC AD+B MF32.90	71MBF-B40MF3209	32	66						-	80	90	2.1	1						
	MAS403 BT40 FC AD+B MF32.140	71MBF-B40MF3214										140			3.1	2				
50	MAS403 BT50 FC AD+B MF20.85	71MBF-B50MF2008	20	48			-	63	1.5			85	47	-	3.7	1				
	MAS403 BT50 FC AD+B MF20.125	71MBF-B50MF2012															87	4.1	2	
	MAS403 BT50 FC AD+B MF32.95	71MBF-B50MF3209	32	66	-	90									-	95	57	-	4.4	1
	MAS403 BT50 FC AD+B MF32.160	71MBF-B50MF3216																		



### K01 MONOforce 12 FC K01 MONOforce 20 FC K01 MONOforce 32 FC

1 MONOforce 12	1 MONOforce 20	1 MONOforce 32
1 RC 12.04	1 RC 20.06	1 RC 32.06
1 RC 12.06	1 RC 20.08	1 RC 32.08
1 RC 12.08	1 RC 20.10	1 RC 32.10
1 RC 12.10	1 RC 20.12	1 RC 32.12
1 CHV 28	1 RC 20.16	1 RC 32.16
	1 CHV 50	1 RC 32.20
		1 RC 32.25
		1 CHV 75

### KIT K01 BT 40

BT	REF.	CODE
40	KIT K01 MONOFORCE 12.60 BT40AD+B FC	7KMBF-B40MF1206
	KIT K01 MONOFORCE 20.63 BT40AD+B FC	7KMBF-B40MF2006
	KIT K01 MONOFORCE 32.90 BT40AD+B FC	7KMBF-B40MF3209



### K01 MONOforce 20 FC K01 MONOforce 32 FC

1 MONOforce 20	1 MONOforce 32
1 RC 20.06	1 RC 32.06
1 RC 20.08	1 RC 32.08
1 RC 20.10	1 RC 32.10
1 RC 20.12	1 RC 32.12
1 RC 20.16	1 RC 32.16
1 CHV 50	1 RC 32.20
	1 RC 32.25
	1 CHV 75

### KIT K01 BT 50

BT	REF.	CODE
50	KIT K01 MONOFORCE 20.85 BT50AD+B FC	7KMBF-B50MF2008
	KIT K01 MONOFORCE 32.95 BT50AD+B FC	7KMBF-B50MF3209

